

**WEST SLOPE
WATER DISTRICT
WASHINGTON COUNTY, OREGON**

COMPREHENSIVE ANNUAL FINANCIAL REPORT

FOR THE YEARS ENDED JUNE 30, 2018 AND 2017



**WEST SLOPE
WATER DISTRICT
WASHINGTON COUNTY, OREGON**

COMPREHENSIVE ANNUAL FINANCIAL REPORT

FOR THE YEARS ENDED JUNE 30, 2018 AND 2017

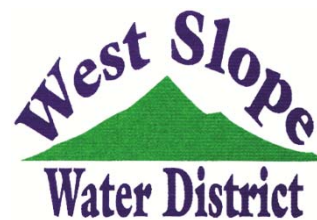


Prepared by
Lucy Dawes
Manager, Finance and Customer Service

WEST SLOPE WATER DISTRICT
TABLE OF CONTENTS
For the Years Ended June 30, 2018 and 2017

	<u>Page</u>
INTRODUCTORY SECTION	
Letter of Transmittal	i-iv
Certificate of Achievement for Excellence in Financial Reporting	v
Organizational Structure	vi
Board of Commissioners	vii
FINANCIAL SECTION	
Independent Auditor’s Report	1-2
Management Discussion and Analysis	3-12
<u>Basic Financial Statements</u>	
Statements of Net Position	13
Statements of Revenues, Expenses, and Changes in Net Position	14
Statements of Cash Flows	15
Notes to the Basic Financial Statements	16-36
<u>Required Supplemental Information</u>	
Schedule of Changes in Total OPEB Liability and Related Ratios	37
Schedule of the District’s Proportionate Share of the Net Pension Liability (Asset) – Oregon Public Employee’s Retirement System	38
Schedule of the District’s Contributions – Oregon Public Employee’s Retirement System	39
<u>Other Supplementary Information</u>	
Reconciliation of Budgetary Basis Change in Fund Balance to GAAP Basis Change in Net Position	40
Schedule of Revenues, Expenditures, and Changes in Fund Balance – Budget and Actual	
General Fund	41
Rate Stabilization Reserve Fund	42
Equipment Reserve Fund	43
Capital Improvement Reserve Fund	44
System Development Charge Fund	45
Notes to the Other Supplementary Information	46
STATISTICAL SECTION (10 YEAR SCHEDULES)	
Net Position by Component	47
Changes in Net Position	48-49
Revenues by Source	50
Water Rate Schedule	51
System Development Charges Schedule	52
Uncollectable Debt	53
Revenue Bond Debt Coverage	54
Debt Per Service Connection	55
Full-Time Equivalent Employees by Function	56
Top Ten Rate Payers	57
Schedule of Water Sales and Purchases	58
Gallons of Water Used by Customers	59
Water Purchased and Consumed	60
INDEPENDENT AUDITOR’S REPORT REQUIRED BY OREGON STATE REGULATIONS	61-62

December 12, 2018



Board of Commissioners
Citizens of West Slope Water District
Portland, Oregon

To: The Board of Commissioners and Citizens

State law requires that every municipal corporation publish, within six months of the close of each fiscal year, unless extended, a complete set of audited financial statements. This report is published to fulfill that requirement for the fiscal year ended June 30, 2018.

Management has full responsibility for the completeness and reliability of the information contained in this report, based upon a comprehensive framework of internal control that it has established for this purpose. Because the cost of internal control should not exceed anticipated benefits; the objective is to provide reasonable, rather than absolute, assurance that the financial statements are free of any material misstatements.

Grove, Mueller & Swank PC, Certified Public Accountants, have issued an unmodified (“clean”) opinion on the West Slope Water District’s financial statements for the year ended June 30, 2018. The independent auditor’s report is located at the front of the financial section of this report.

Management’s discussion and analysis (MD&A) immediately follows the independent auditor’s report and provides a narrative introduction, overview, and analysis of the basic financial statements. The MD&A complements this letter of transmittal and should be read in conjunction with it.

Profile of the District

The West Slope Water District provides domestic water service to residential and commercial customers as well as water for fire protection. The District is located in eastern Washington County, Oregon with a current service area of approximately three-and-one-half square miles and over 10,000 residents. Washington County is located in northwestern Oregon, and is one of the counties that comprise the Portland Metropolitan Statistical Area. The District was formed in 1922, operating as authorized by Oregon Revised Statutes Chapter 264. The District is not a component of any other entity, nor does the District have potential component units, as defined by the Governmental Accounting Standards Board. A five-member Board of Commissioners, elected to overlapping four-year terms of office governs the district. The Board of Commissioners set policy and appoint a General Manager, who is charged with management of the District.

The District is organized into two units reporting to the General Manager. Three Water Works Operators report directly to the Manager, Operations. The Customer Service and Utility Billing Specialist reports directly to the Manager, Finance and Customer Service.

The District’s Board of Commissioners is required to adopt a budget each year by July 1st. The annual budget serves as the foundation for the District’s financial planning and control for the District’s activities. The District maintains accounting records by object within each fund and the budget is prepared, adopted, and appropriated on that same basis within each fund. Most budget changes after adoption require a resolution by the Board of Commissioners.

West Slope Water District purchases 100% of its water from the City of Portland. The District Board of Commissioners signed a 20-year Regional Water Sales Agreement with the City of Portland effective July 1, 2006 which secured water resources from the Bull Run Watershed and Columbia South Shore well fields through June 30, 2026.

The District is fortunate to have a backup intertie with the Tualatin Valley Water District (TVWD). The intertie supplies the District with on-demand water supply for emergencies and scheduled maintenance. District staff monitor interties with Portland and TVWD utilizing Supervisory Control and Data Acquisition (SCADA) controls.

The District's transmission and distribution systems total 48 miles of water main ranging in size from 2 to 18 inches in diameter, containing one 2.25 million gallon concrete reservoir, one 3 million gallon concrete reservoir and one 0.8 million gallon steel tank. All reservoirs are covered and secured. The District maintains over 450 hydrants, 800 valves, and 3,200 water meters.

The City of Beaverton withdrew approximately 5% of the District's service territory in May 2009. The District and the City of Beaverton finalized an Intergovernmental Agreement (IGA) on May 18, 2011 for debt service and unclaimed water reimbursement. Additional information about the IGA with the City of Beaverton can be found in the Notes to the Financial Statement on page 35.

Local Economy

The District serves an area fully developed with minimal vacant land. The development experienced is generally in-fill. The expected growth for the District's service territory is minimal, at 0.3 percent. The majority of the District's service territory is residential with a mix of commercial running down Canyon Road and Beaverton-Hillsdale Highway.

The majority of the District's operating revenue comes from the sale of water to residential and commercial customers. Because, as noted above, the District has very little available property for additional development, fluctuations in revenue are driven primarily by variations in outdoor temperature and the responsive demand for landscape irrigation by both residential and commercial customers.

Under the terms of the 20-year Regional Water Sales Agreement between the City of Portland as wholesale water provider and the District as one of multiple wholesale water purchasers, the District's purchased water costs can be significantly impacted by capital improvement costs undertaken by the City of Portland. The District closely monitors its eight-year financial plan which utilizes among other variables the wholesale water rate forecasts provided by the City of Portland. Recent forecasts from the City of Portland have shown substantial increases to their wholesale water rates over the next eight years. To meet increased purchased water costs the District will be required to increase customer rates correspondingly.

The District receives minimal revenues from the assessment of System Development Charges (SDC). This revenue source is statutorily restricted to be used for purchase or construction of new or expansion of existing facilities, improvements, and land within the District. Effective since December 1, 2015 the SDC for a standard residential meter (5/8 x 3/4) is \$1,344. Additional SDC fee historical data is located in the Statistical Section on page 52.

During the fiscal year ended June 30, 2018 the District used SDC funds to pay one bond interest payment of \$56,028. This practice will be suspended for fiscal year ending June 30, 2019 due to diminished SDC fund balance. This does not change how the District calculates debt coverage and related debt covenants. Information about debt covenants is located in the Management Discussion and Analysis on page 12, the Notes to the Financial Statement on page 23, and the Statistical Section on page 54. Management regularly monitors water sales, expenses, and debt coverage.

Long-term financial planning

The District maintains a Ten Year Water System Master Plan which serves as its planning document to ensure that facilities, equipment, and infrastructure are well maintained and operating in peak condition. The Water System Master Plan was updated and approved by the Board of Commissioners on February 19, 2014. The Master Plan was developed with a team comprised of District staff, and professionals in engineering and finance. Replacement of infrastructure is identified and rated by importance related to critical District operations. A few of the factors in the decision making process are the fire flow capabilities and age and repair history of infrastructure.

The District's current bond rating by Moody's Global Rating Scale is A1. The District has no plans for future borrowing. The District historically borrowed money to build replacement reservoirs. Current financial plans include annual contributions into the Capital Improvement Reserve fund which are utilized to provide needed system replacement on a pay as you go basis.

Effective June 30, 2018 the District established a rate stabilization reserve fund and made a transfer of \$200,000 from the General Fund into the Rate Stabilization Fund as is allowed under the Master Resolution for the 2008 Revenue Bonds. The rate stabilization reserve funds will be utilized as needed in future years to ensure that debt coverage covenants can be met in unpredictable situations. One such situation would be extended cool weather combined with a rate spike for water purchased from the City of Portland under the Regional Water Sales Agreement. Funds can be transferred into and out of the rate stabilization fund as designated by the District's Board of Commissioners. Based upon current eight year purchased water rate forecasts provided by the City of Portland, in order to avoid substantial customer rate spikes in one or more future years, the District's current eight year financial plan indicates increases to the rate stabilization reserve fund will be needed through the fiscal year end June 30, 2022, and withdrawals will be needed to meet bond debt covenants in fiscal year end June 30, 2023.

The District commissioners and staff have a responsibility to protect the District assets from fraud. With a small finance staff we have addressed the limited separation of duties; a leading fraud prevention measure. The District maintains a system of internal accounting controls that is reviewed annually by management. The controls are designed to safeguard District assets and ensure accurate recording of transactions. District controls include oversight by the District's Commissioners and General Manager of bank reconciliations, issued checks, investments, financial reports, and other District business as necessary.

Financial Policies

Consistent with the GFOA best practice, the District maintains a General Fund operating expense contingency equal to three months of General Fund operating expenses.

Capital projects are pre-funded via budgeted accumulations of transfers from the General Fund into the Capital Improvement Reserve fund.

Equipment replacement is pre-funded as per depreciation schedules.

SDC funds will be utilized when available to make bond debt service payments on outstanding Bonds whose proceeds were utilized for capital improvements.

Awards and Acknowledgements

The Government Finance Officers Association of the United States and Canada (GFOA) awarded a Certificate of Achievement for Excellence in Financial Reporting to West Slope Water District for its comprehensive annual financial report for the fiscal year ended June 30, 2017. This was the twelfth year the District has achieved this prestigious award. In order to be awarded a Certificate of Achievement, a government must publish an easily readable and efficiently organized comprehensive annual financial report. This report must satisfy both generally accepted accounting principles and applicable legal requirements.

A Certificate of Achievement for Excellence in Financial Reporting is valid for a period of one year only. We believe that our current comprehensive annual financial report continues to meet the Certificate of Achievement Program's requirements and we are submitting it to the GFOA to determine its eligibility for another certificate.

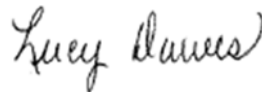
The preparation of this report could not have been accomplished without the efficient and dedicated services of the entire District staff. We wish to express our appreciation to all members of the District staff who assisted and contributed to the timely completion of this report.

Credit also must be given to the Board of Commissioners for their unfailing support for maintaining high standards of professionalism in the management of the District finances. Their guidance and leadership are of invaluable service to the financial management and stability of the District.

Respectfully Submitted,



Michael Grimm
General Manager



Lucy Dawes
Manager, Finance & Customer Service



Government Finance Officers Association

Certificate of
Achievement
for Excellence
in Financial
Reporting

Presented to

**West Slope Water District
Oregon**

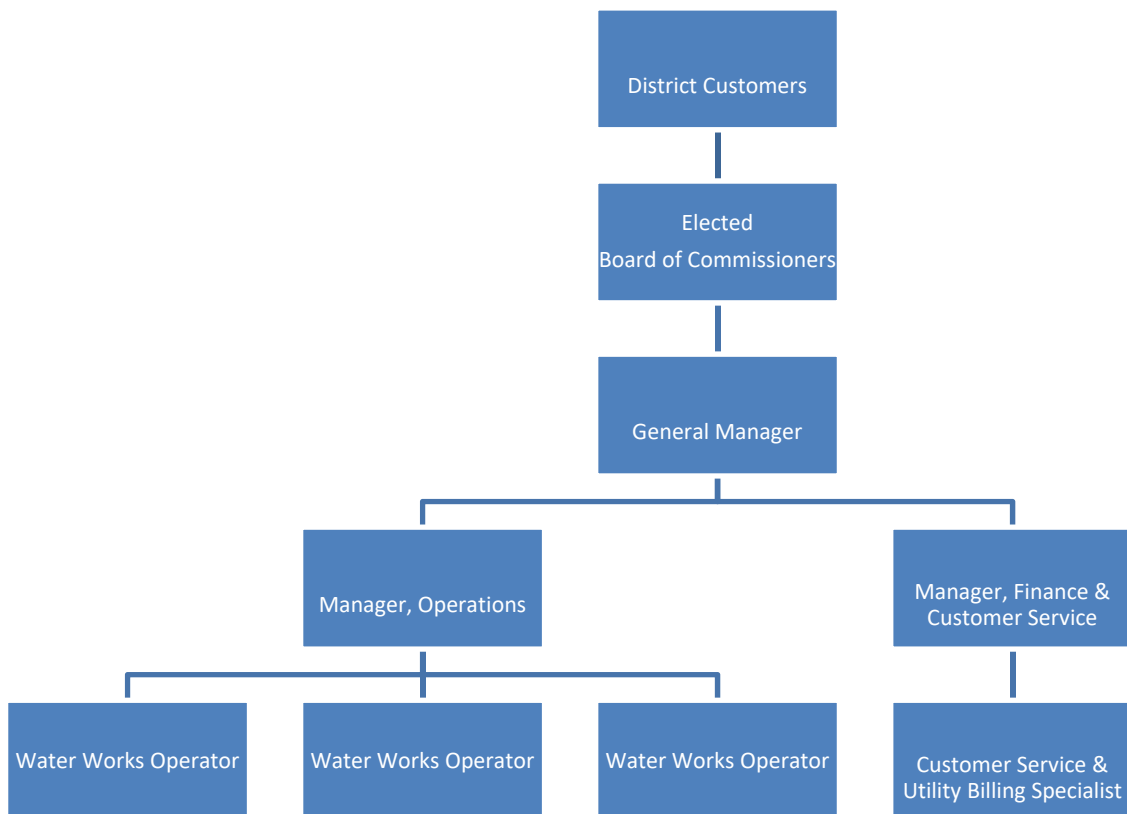
For its Comprehensive Annual
Financial Report
for the Fiscal Year Ended

June 30, 2017

Christopher P. Morrill

Executive Director/CEO

West Slope Water District Organization Structure



WEST SLOPE WATER DISTRICT
BOARD OF COMMISSIONERS
June 30, 2018

<u>Board of Commissioners</u>	<u>Term Expires</u>
Robert W. Rieck, Chair	June 30, 2019
Michael Hoffman, Treasurer	June 30, 2021
Carol Wild, Secretary	June 30, 2019
Charlie Conrad	June 30, 2021
Noel Reiersen	June 30, 2021

Commissioners may be contacted at the address below:

Registered Agent
Michael W. Grimm, P.E.

3105 SW 89th Avenue
Portland, Oregon 97225

P.O. Box 25140
Portland, Oregon 97298



GROVE, MUELLER & SWANK, P.C.

ed

CERTIFIED PUBLIC ACCOUNTANTS AND CONSULTANTS

475 Cottage Street NE, Suite 200, Salem, Oregon 97301

(503) 581-7788

INDEPENDENT AUDITOR'S REPORT

Board of Commissioners
West Slope Water District
Portland, Oregon

Report on the Financial Statements

We have audited the accompanying basic financial statements of the West Slope Water District (the District) which comprises the statements of net position as of June 30, 2018 and 2017, and the related statements of revenue, expenses, and changes in net position, and cash flows for the years then ended, and the related notes to the basic financial statements.

Management's Responsibility for the Financial Statements

Management is responsible for the preparation and fair presentation of these basic financial statements in accordance with accounting principles generally accepted in the United States of America; this includes the design, implementation, and maintenance of internal control relevant to the preparation and fair presentation of financial statements that are free from material misstatement, whether due to fraud or error.

Auditor's Responsibility

Our responsibility is to express opinions on these basic financial statements based on our audits. We conducted our audits in accordance with auditing standards generally accepted in the United States of America. Those standards require that we plan and perform the audit to obtain reasonable assurance about whether the financial statements are free from material misstatement.

An audit involves performing procedures to obtain audit evidence about the amounts and disclosures in the financial statements. The procedures selected depend on the auditor's judgment, including the assessment of the risks of material misstatement of the financial statements, whether due to fraud or error. In making those risk assessments, the auditor considers internal control relevant to the District's preparation and fair presentation of the financial statements in order to design audit procedures that are appropriate in the circumstances, but not for the purpose of expressing an opinion on the effectiveness of the District's internal control. Accordingly, we express no such opinion. An audit also includes evaluating the appropriateness of accounting policies used and the reasonableness of significant accounting estimates made by management, as well as evaluating the overall presentation of the financial statements.

We believe that the audit evidence we have obtained is sufficient and appropriate to provide a basis for our audit opinion.

Opinion

In our opinion, the basic financial statements referred to above present fairly, in all material respects, the financial position of the West Slope Water District as of June 30, 2018 and 2017, and the results of its operations and its cash flows for the years then ended in accordance with accounting principles generally accepted in the United States of America.

Other Matters

Required Supplementary Information

Accounting principles generally accepted in the United States of America require that the management’s discussion and analysis, the schedule of changes in total OPEB liability and related ratios, schedule of the District’s proportionate share of the net pension liability and the schedule of pension plan contributions be presented to supplement the basic financial statements. Such information, although not a part of the basic financial statements, is required by the Governmental Accounting Standards Board who considers it to be an essential part of financial reporting for placing the basic financial statements in an appropriate operational, economic, or historical context. We have applied certain limited procedures to the required supplementary information in accordance with auditing standards generally accepted in the United States of America, which consisted of inquiries of management about the methods of preparing the information and comparing the information for consistency with management’s responses to our inquiries, the basic financial statements, and other knowledge we obtained during our audit of the basic financial statements. We do not express an opinion or provide any assurance on the information because the limited procedures do not provide us with sufficient evidence to express an opinion or provide any assurance.

Other Information

Our audit was conducted for the purpose of forming opinions on the financial statements that collectively comprise the District’s basic financial statements. The other supplementary information, as listed in the table of contents, are presented for purposes of additional analysis and are not a required part of the basic financial statements. The other supplemental information have been subjected to the auditing procedures applied in the audit of the basic financial statements and certain additional procedures, including comparing and reconciling such information directly to the underlying accounting and other records used to prepare the basic financial statements or to the basic financial statements themselves, and other additional procedures in accordance with auditing standards generally accepted in the United States of America. In our opinion, the other supplemental information is fairly stated in all material respects in relation to the basic financial statements as a whole.

The introductory and statistical sections are also not required parts of the basic financial statements, but are supplementary information provided for the purposes of additional analysis. We did not audit or perform any other procedures on this information and express no opinion on it.

Report on Other Legal and Regulatory Requirements

In accordance with Minimum Standards for Audits of Municipal Corporation, we have issued our report dated December 12, 2018, on our consideration of the District’s compliance with certain provisions of laws and regulations, including the provisions of Oregon Revised Statutes as specified in Oregon Administrative Rules. The purpose of that report is to describe the scope of our testing of compliance and the results of that testing and not to provide an opinion on compliance.

GROVE, MUELLER & SWANK, P.C.
CERTIFIED PUBLIC ACCOUNTANTS

By: 

Devan W. Esch, A Shareholder
December 12, 2018

**West Slope Water District
Management's Discussion and Analysis
June 30, 2018**

As management of the West Slope Water District (District), we offer readers of the District's financial statements this narrative overview and analysis of the financial activities of the District for the fiscal year ended June 30, 2018. We encourage readers to consider the information presented here in conjunction with additional information that we have furnished in our letter of transmittal, and financial statements.

Financial Highlights

- The District's total net position exceeded its liabilities at the close of the most recent fiscal year by \$10,024,209 (*net position*). Of this amount, \$2,472,570 (unrestricted assets) may be used to meet the District's obligations to its creditors.
- The District's net position increased by \$383,368 or 4%. Unrestricted assets decreased \$15,061 or .06%.
- The District's non-current liabilities decreased by \$695,690, or 16% during the current fiscal year.

Overview of the Financial Statements

The discussion and analysis are intended to serve as an introduction to the West Slope Water District's basic financial statements. The District is a self-supporting entity and follows enterprise fund reporting. Accordingly, the financial statements are presented using the economic resources measurement focus and accrual basis of accounting. The District's basic financial statements are comprised of four components; 1) Statements of Net Position, 2) Statements of Revenues, Expenses and Changes in Net Position, 3) Statements of Cash Flows, and 4) Notes to the Basic Financial Statements. This report also contains supplementary information intended to furnish additional detail to support the basic financial statements.

The Statement of Net Position presents information on all of the District's assets and liabilities, with the difference between the two reported as net position. Over time, increases or decreases in net position may serve as a useful indicator of whether the financial position of the District is improving or deteriorating. The Statement of Revenues, Expenses, and Changes in Net Position present information showing how the District's assets changed during the most recent fiscal year. All changes in net position are reported as soon as the underlying event giving rise to the change occurs, regardless of the timing of the related cash flows. Thus, revenues and expenses are reported in this statement for some items that will only result in cash flows in future fiscal periods (e.g., earned but unused vacation leave).

The Statement of Cash Flows shows the sources and uses of cash. It details cash flows from the operating activities, capital and related financing activities and investing activities. The Notes to the Financial Statements beginning on page 16 provide additional information essential to a full understanding of the data provided in the financial statements.

Financial Analysis

Net Position

As noted earlier, net position may serve over time as a useful indicator of the District's financial position. As shown below in Table 1, the District's net position exceeded liabilities by \$10 million this current fiscal year, \$9.6 million at the close of the prior fiscal year, and \$9.3 million at the close of fiscal year 2016.

By far the largest portion of the District's net position reflects the investment in capital assets (e.g. pipelines, meters, valves, reservoirs, land, buildings, and equipment), less any related outstanding debt that was used to acquire those assets. The District uses these assets to provide water services to ratepayers; consequently, these assets are not available for future spending.

Table 1
Net Position
FY 2018 – FY 2016

	<u>2018</u>	<u>2017</u>	<u>2016</u>	<u>Difference 2017-2018</u>	<u>Percent Change</u>
Current and Other Assets	\$ 3,613,842	\$ 3,646,038	\$ 4,391,731	\$ (32,196)	-0.9%
Capital Assets	10,541,439	10,335,392	9,331,289	206,047	2.0%
Total Assets	14,155,281	13,981,430	13,723,020	173,851	1.2%
Deferred outflows of resources	309,480	581,563	109,489	(272,083)	-46.8%
Total Assets & Deferred Outflows of Resources	14,464,761	14,562,993	13,832,509	(98,232)	-0.7%
Current Liabilities	605,366	546,122	509,908	59,244	10.8%
Noncurrent Liabilities	3,644,819	4,340,509	3,941,906	(695,690)	-16.0%
Total Liabilities	4,250,185	4,886,631	4,451,814	(636,446)	-13.0%
Deferred Inflows of Resources	190,367	35,521	94,632	154,846	435.9%
Total Liabilities & Deferred Inflows of Resources	4,440,552	4,922,152	4,546,446	(481,600)	-9.8%
Net Investment in Capital Assets	7,548,389	7,099,958	5,863,471	448,431	6.3%
Restricted for Capital Projects	3,250	53,252	110,512	(50,002)	-93.9%
Unrestricted	2,472,570	2,487,631	3,312,080	(15,061)	-0.6%
Total Net Position	<u>\$ 10,024,209</u>	<u>\$ 9,640,841</u>	<u>\$ 9,286,063</u>	<u>\$ 383,368</u>	4.0%

Change in Net Position

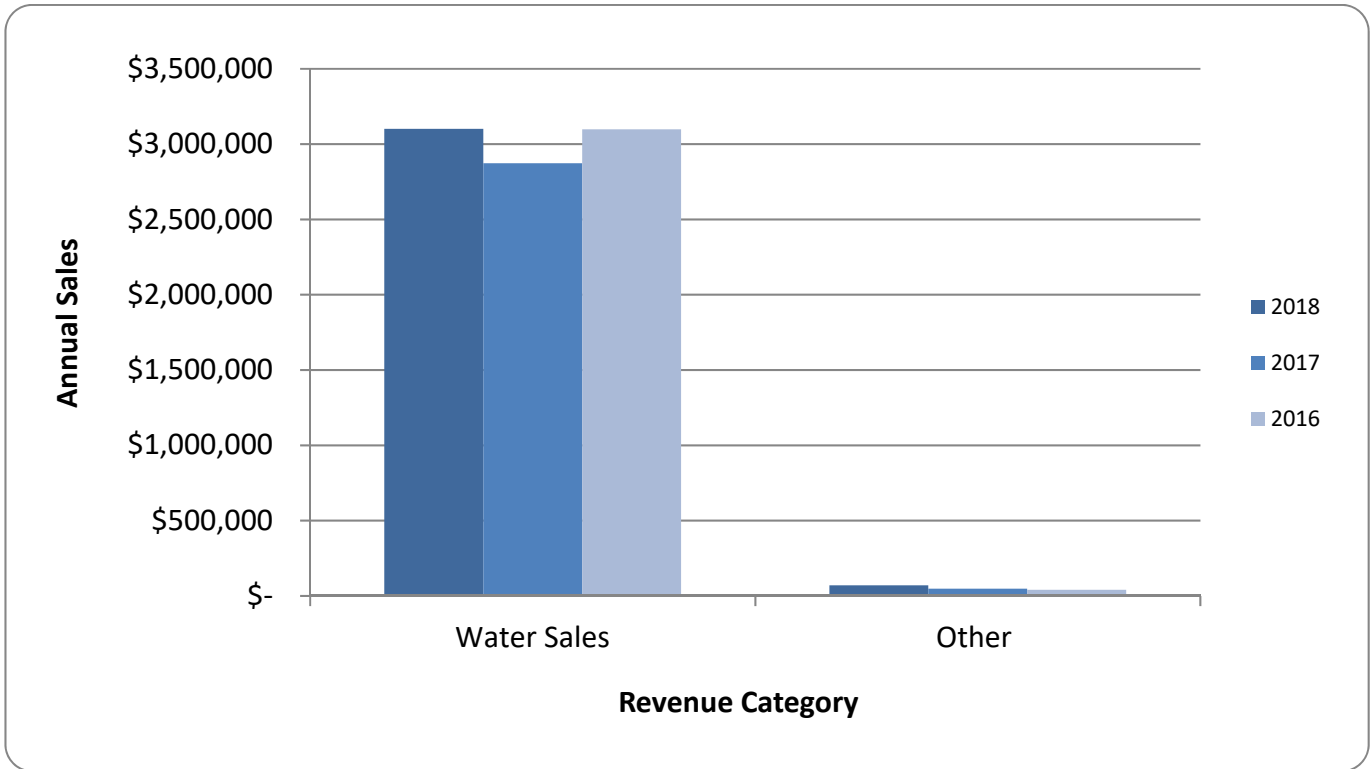
As shown below in Table 2, the District's change in net position for FYE June 30, 2018 was an increase of \$383,368 or 4% from prior year. The change in net position for FYE June 30, 2017 was an increase of \$354,778 or 3.8% from FYE June 30, 2016. The increase each year is generated primarily by operating income from water sales that exceed operating expenses.

Operating Income. The District generated \$445,420 of operating income in the FYE June 30, 2018, which is a decrease of \$9,693 or 2.1% from FYE June 30, 2017. The District generated \$455,113 of operating income in the FYE June 30, 2017 which is a \$17,166 or 3.9% increase over FYE June 30, 2016.

**Table 2
Change in Net Position
FY 2018 – FY 2016**

	<u>2018</u>	<u>2017</u>	<u>2016</u>	<u>Difference 2017-2018</u>	<u>Percent Change</u>
Current and Other Assets	\$ 3,613,842	\$ 3,646,038	\$ 4,391,731	\$ (32,196)	-0.9%
Capital Assets	10,541,439	10,335,392	9,331,289	206,047	2.0%
Total Assets	14,155,281	13,981,430	13,723,020	173,851	1.2%
Deferred outflows of resources	309,480	581,563	109,489	(272,083)	-46.8%
Total Assets & Deferred Outflows of Resources	14,464,761	14,562,993	13,832,509	(98,232)	-0.7%
Current Liabilities	605,366	546,122	509,908	59,244	10.8%
Noncurrent Liabilities	3,644,819	4,340,509	3,941,906	(695,690)	-16.0%
Total Liabilities	4,250,185	4,886,631	4,451,814	(636,446)	-13.0%
Deferred Inflows of Resources	190,367	35,521	94,632	154,846	435.9%
Total Liabilities & Deferred Inflows of Resources	4,440,552	4,922,152	4,546,446	(481,600)	-9.8%
Net Investment in Capital Assets	7,548,389	7,099,958	5,863,471	448,431	6.3%
Restricted for Capital Projects	3,250	53,252	110,512	(50,002)	-93.9%
Unrestricted	2,472,570	2,487,631	3,312,080	(15,061)	-0.6%
Total Net Position	<u>\$ 10,024,209</u>	<u>\$ 9,640,841</u>	<u>\$ 9,286,063</u>	<u>\$ 383,368</u>	4.0%

**Figure 1
Operating Revenue Comparison
FY 2018 – FY 2016**

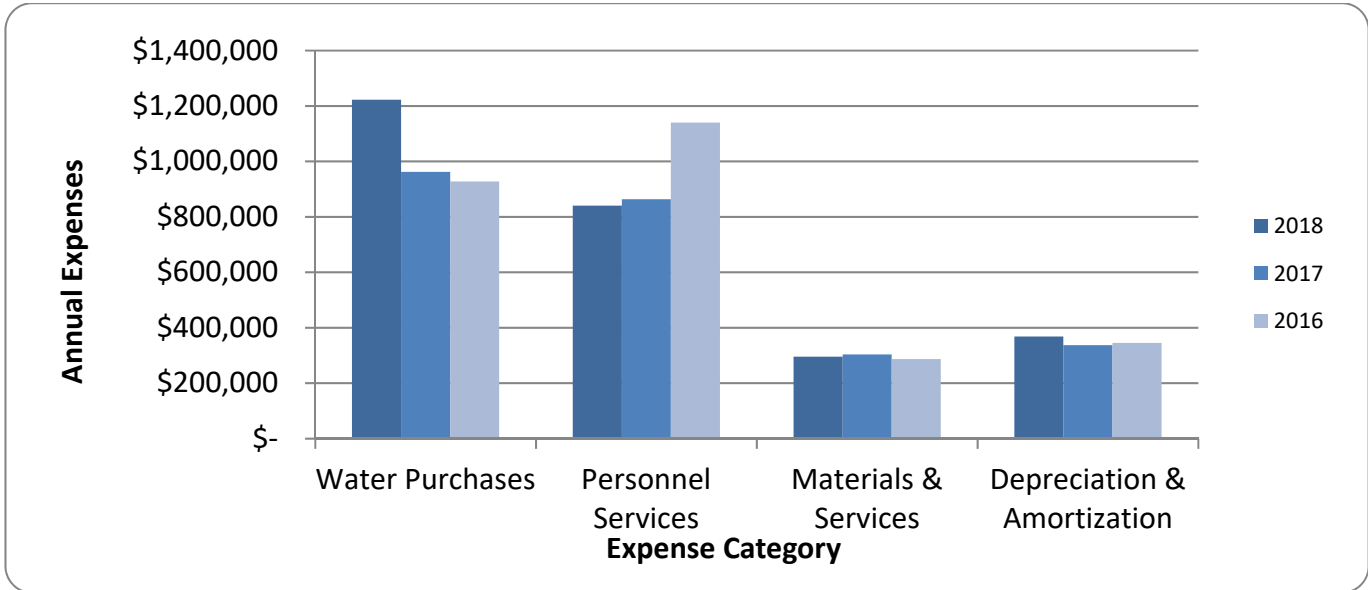


Operating Revenues. The District’s total operating revenue in FY 2018 increased by \$250,653 or 8.6% due primarily to increased water revenue of \$228,309 or 7.9% compared to FY 2017. Total operating revenues for FY 2017 decreased by \$216,845 or 6.9% due to decreased water revenue of \$224,799 or 7.3% compared to FY 2016. The weather in 2018 and 2016 was dryer and hotter than during fiscal year 2017.

Other Revenue of \$70,710 shown above in Figure 1 for FY 2018 is an increase of \$22,344 or 46.2% compared to \$48,366 in FY 2017. The FY 2018 increase is primarily due to a full year of the new Rights of Way Fee revenue which is charged to District customers residing within the Beaverton city limits. This revenue is passed on to the City of Beaverton in payment of their newly imposed ROW fee which became effective November 2016.

FY 2017 other revenue at \$48,366 increased \$7,954 or 19.7% from FY 2016 also due primarily to the new Rights of Way Fee for Beaverton which was partially offset by declines in new service installs.

**Figure 2
Operating Expense Comparison
FY 2018 – FY 2016**



Operating Expenses. Total operating expenses for FY 2018 increased \$260,346 or 10.56% from FY 2017. Total operating expenses for FY 2017 decreased \$234,011 or 8.7% from FY 2016.

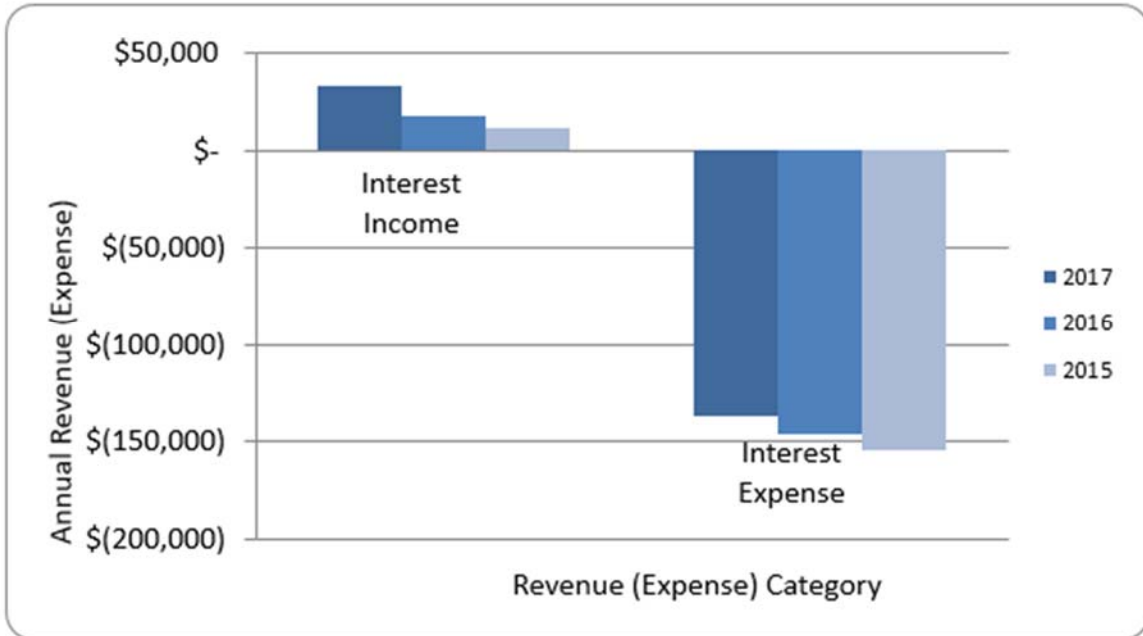
Water purchased by the District is the largest single operating expense and increased \$260,286 or 27.04% in FY 2018 over FY 2017. FY 2017 water purchases increased \$34,667 or 3.7% from FY 2016. The FY 2018 increase was due to the combination of a purchase of an additional 25,495 units of interruptible water from the City of Portland (City) combined with increased rates paid for the guaranteed minimum quantity. The FY 2017 increase was due only to increased rates paid to the City for the guaranteed minimum quantity under the terms of the Regional Water Sales Agreement with the City. As mentioned in the Letter of Transmittal, the District purchases water from the City of Portland and has a backup intertie with Tualatin Valley Water District. The District has a 20-year wholesale water contract with the City of Portland which includes a minimum purchase requirement and cost variables based on water demand characteristics and Portland Water Bureau capital projects and borrowing costs. The wholesale contract began July 1, 2006.

Personnel services for FY 2018 decreased \$22,776 or 2.64% from the prior fiscal year. Personnel services for FY 2017 decreased \$276,621 or 24.3% from FY 2016. The swings in both years are due primarily to swings in the unfunded liability for employee retirement costs.

FY 2018 retirement expense decreased \$85,179 from FY 2017, and FY 2017 decreased \$261,085 from FY 2016. The FY 2017 and 2018 decreases were caused primarily by the decrease to the District’s PERS unfunded liability due to better than expected actual earnings on funds invested in the OPERS trust. Additional information about the District pension plan can be found in the Notes to the Financial Statements starting on page 23.

Materials and services for 2018 decreased \$8,036 or 2.65% from FY 2017. This decrease is comprised primarily of reductions to system maintenance of \$19,407, increases of \$18,674 due to the full year of rights of way fees imposed by Beaverton, and \$8,976 of decreases in administrations costs. FY 2017 materials and services increased \$16,216 or 5.6% over FY 2016 due primarily to the new rights of way fee enacted by the City of Beaverton in November 2016. FY 2016 decreased only slightly from FY 2015 by \$3,659 or 1.3%.

**Figure 3
Non-operating Revenue (Expense) Comparison
FY 2018 – FY 2016**



Non-operating Revenues (Expenses). Total non-operating revenue (expense) decreased \$35,595 or 34.55% in FY 2018 from the previous fiscal year. Interest expense and interest income showed favorable gains over FY 2017. Additionally FY 2018 realized a \$12,000 gain on the work truck traded-in. FY 2018 interest expense declined \$9,933, or 7.29%, and interest income increased \$13,663 or 41.2% over FY 2017.

Total non-operating revenues (expenses) increased \$24,733 or 19.4% in FY 2017 from the previous fiscal year. Both interest income and interest expense showed favorable gains over FY 2016. FY 2017 interest expense declined \$9,421, or 6.5%, and interest income increased \$15,312, or 85.8% over FY 2016.

The increases in interest income described above for the District are due to a significant increase in market interest rates during FY 2017 and 2018. The District invests available funds with the State of Oregon Local Government Investment Pool. Investments are regulated by the Oregon Short-term Fund Board and approved by the Oregon Investment Council.

Bond interest expense for the District continues to decline year-over-year as outlined above, due to the scheduled paydown of the outstanding bond balance. In addition to Bond interest, interest expense also includes \$14,185 and \$14,616 in FY 2018 and FY 2017 respectively of interest related to the transitional unfunded liability due to PERS.

Table 3
Total Revenues and Total Expenses
FY 2018 – FY 2016

	<u>2018</u>	<u>2017</u>	<u>2016</u>	<u>Difference 2017-2018</u>	<u>Percent Change</u>
Operating Revenues	\$ 3,172,059	\$ 2,921,406	\$ 3,138,251	\$ 250,653	8.6%
Non-operating Revenues	<u>58,827</u>	<u>33,164</u>	<u>17,852</u>	<u>25,663</u>	77.4%
Total Revenues	<u><u>\$ 3,230,886</u></u>	<u><u>\$ 2,954,570</u></u>	<u><u>\$ 3,156,103</u></u>	<u><u>\$ 276,316</u></u>	9.4%
Operating Expenses	\$ 2,726,639	\$ 2,466,293	\$ 2,700,304	\$ 260,346	10.6%
Non-operating Expenses	<u>126,254</u>	<u>136,187</u>	<u>145,608</u>	<u>(9,933)</u>	-7.3%
Total Expenses	<u><u>\$ 2,852,893</u></u>	<u><u>\$ 2,602,480</u></u>	<u><u>\$ 2,845,912</u></u>	<u><u>\$ 250,413</u></u>	9.6%

Total Revenues and Expenses

Total FY 2018 revenue and expense for the District is shown in Table 3 above.

Total revenue increased \$276,316 or 9.4% over FY 2017. FY 2017 total revenue decreased \$201,533 or 6.4% compared to FY 2016.

Total FY 2018 expense increased \$250,413 or 9.6% from the previous fiscal year. FY 2017 total expense decreased \$243,432 or 8.6% compared to FY 2016.

Table 4
Capital Assets FY 2018

	<i>Beginning Balance</i>	<i>Additions</i>	<i>Deletions</i>	<i>Ending Balance</i>
Capital Assets, non-depreciable:				
Land	\$ 44,724	\$ -	\$ -	\$ 44,724
Construction in progress	1,451,305	487,503	(1,930,508)	8,300
Total capital assets, non-depreciable	<u>1,496,029</u>	<u>487,503</u>	<u>(1,930,508)</u>	<u>53,024</u>
Capital assets, depreciable:				
Buildings	354,306	10,418	-	364,724
Water Systems	13,381,713	1,930,508	-	15,312,221
Equipment	913,114	76,115	(24,040)	965,189
Total capital assets, depreciable	<u>14,649,133</u>	<u>2,017,041</u>	<u>(24,040)</u>	<u>16,642,134</u>
Less: accumulated depreciation				
Buildings	(151,683)	(10,620)	-	(162,303)
Water Systems	(5,204,736)	(301,203)	-	(5,505,939)
Equipment	(453,351)	(56,166)	24,040	(485,477)
Total accumulated depreciation	<u>(5,809,770)</u>	<u>(367,989)</u>	<u>24,040</u>	<u>(6,153,719)</u>
Net depreciable capital assets	<u>8,839,363</u>	<u>1,649,052</u>	<u>-</u>	<u>10,488,415</u>
Net capital assets	<u><u>\$ 10,335,392</u></u>	<u><u>\$ 2,136,555</u></u>	<u><u>\$ (1,930,508)</u></u>	<u><u>\$ 10,541,439</u></u>

Capital Assets Activity

As shown in Table 4 above, West Slope Water District's capital assets, net of depreciation as of June 30, 2018 are \$10,541,439. The District's capital assets included \$44,727 in land, \$8,300 of work in progress and \$10,488,415 in buildings, reservoirs, pipelines, automotive and construction equipment net of accumulated depreciation. The total increase in the District's investment in capital assets (net of accumulated depreciation) for the FY 2018 was \$206,047 or 2% from FY 2017.

This increase consists primarily of completion of the seismic upgrade to the District's green tank which was brought back on-line in August 2017, the replacement of a heavy duty work truck, and the addition of a used Vactor Truck.

Radio read meter purchases were deferred until next fiscal year. In July of 2018 the District switched brands of radio meters and has begun replacing some older failing radios while continuing to convert the approximately 700 remaining manual read meters to new radio read meters.

Figure 4
Distribution of Capital Assets
FY 2018

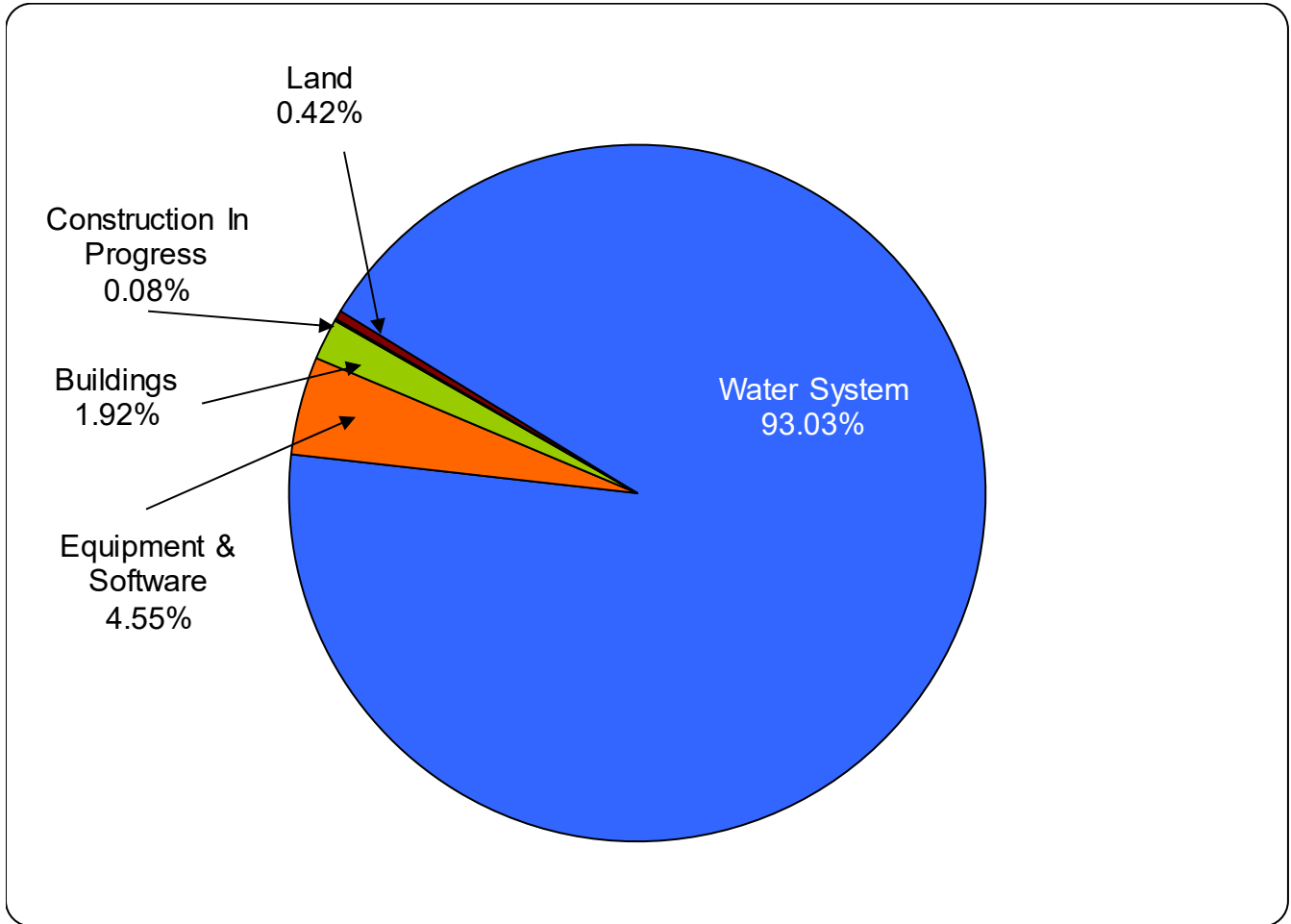


Figure 4 above shows the District's capital asset categories and their portion (percentage) of the District's total asset value in FY 2018. Additional information on the District's capital assets can be found on pages 20 and 21 in the Notes to the Financial Statements.

Long-Term Debt Activity

On June 30, 2018 the West Slope Water District had total outstanding bonded indebtedness of \$2.9 million as shown in Table 4 below. The District issued the water revenue bonds to finance capital improvements, most importantly a new 3 million gallon water reservoir replacing the failing Reservoir 1. The bond matures during FY 2029 and is insured with Financial Security Assurance Inc. (FSA). The District has an underlying rating from Moody's of A1.

On January 16, 2008 the Board of Commissioners adopted the master resolution including covenants to maintain annual net operating revenues that equal or exceed 1.25 times revenue bond debt service for the fiscal year and at least 1.15 times debt service less system development charges collected during the fiscal year. As of fiscal year-end 2018 and 2017 the District maintained compliance with these water revenue bond debt service coverage requirements. FY 2018 net operating revenues plus SDC revenue minus transfers into the rate stabilization fund totaled \$644,664 or 1.8 times debt service.

On June 20, 2018 the Board of Commissioners adopted resolution 04-2018 to establish a rate stabilization fund which will provide the ability as per the 2008 bond master resolution to smooth variations in revenue for purposes of meeting the bond debt service covenants. A supplemental budget was adopted also on June 20, 2018 moving \$200,000 from General Fund contingency into the Rate Stabilization fund. The fund was established in response to significant projected future rate increases from the City of Portland which were provided to the District in March 2018.

Table 4
Outstanding Revenue Bond Debt
FY 2018 – FY 2016

	<u>2018</u>	<u>2017</u>	<u>2016</u>
Revenue Bond	<u>\$ 2,993,050</u>	<u>\$ 3,235,433</u>	<u>\$ 3,467,818</u>

The Notes to the Financial Statements of this report contain more detailed information regarding the status of bonded debt as of June 30, 2018, including schedules of future debt service requirements which begin on page 22. In addition, further detailed information regarding debt activity is contained in the statistical section of this report beginning on page 54.

Conditions Affecting Current Financial Position

Management is unaware of any conditions not disclosed in this report that would have a significant impact on the District's financial positions, net position, or operating results in terms of past, present and future.

Requests for Information

The financial report is designed to provide a general overview of West Slope Water District's finances for all those with an interest in the District's finances. Questions concerning any of the information provided in this report or requests for additional information should be addressed to the Finance Manager, West Slope Water District, PO Box 25140, Portland, Oregon 97298, or ldawes@wswd.org.

BASIC FINANCIAL STATEMENTS

The basic financial statements include interrelated sets of financial statements as required by the GASB. In addition, the notes to the basic financial statements are included to provide information that is essential to a user's understanding of the basic financial statements.

WEST SLOPE WATER DISTRICT
WASHINGTON COUNTY, OREGON
STATEMENTS OF NET POSITION
June 30, 2018 and 2017

	<u>2018</u>	<u>2017</u>
ASSETS		
<i>Current Assets</i>		
Cash and investments	\$ 3,101,349	\$ 3,162,945
Accounts receivable	460,801	379,019
Prepaid expenses	22,656	21,294
Inventories	25,786	29,528
<i>Total Current Assets</i>	<u>3,610,592</u>	<u>3,592,786</u>
<i>Noncurrent Assets</i>		
Restricted cash	3,250	53,252
Non-depreciable capital assets	53,024	1,496,029
Depreciable capital assets, net of depreciation	10,488,415	8,839,363
<i>Total Noncurrent Assets</i>	<u>10,544,689</u>	<u>10,388,644</u>
<i>Total Assets</i>	14,155,281	13,981,430
DEFERRED OUTFLOWS OF RESOURCES		
Deferred outflows - related to pension liability	309,480	581,563
<i>Total assets and deferred outflows of resources</i>	<u>\$ 14,464,761</u>	<u>\$ 14,562,993</u>
LIABILITIES		
<i>Current Liabilities</i>		
Accounts payable and accrued liabilities	\$ 190,056	\$ 156,802
Accrued payroll liabilities	61,156	56,752
Customer deposits	15,722	16,716
Compensated absences	44,976	37,847
Interest payable	28,014	30,414
Current portion of pension transitional liability	13,058	5,207
Current portion of long-term debt	252,384	242,384
<i>Total Current Liabilities</i>	<u>605,366</u>	<u>546,122</u>
<i>Noncurrent Liabilities</i>		
Other post employment benefits	78,141	63,518
Net pension liability	652,438	1,088,476
Noncurrent portion of pension transitional liability	173,574	195,465
Noncurrent portion of long-term debt	2,740,666	2,993,050
<i>Total Noncurrent Liabilities</i>	<u>3,644,819</u>	<u>4,340,509</u>
<i>Total Liabilities</i>	4,250,185	4,886,631
DEFERRED INFLOWS OF RESOURCES		
Deferred inflows - related to pension liability	190,367	35,521
NET POSITION		
Net investment in capital assets	7,548,389	7,099,958
Restricted for capital projects	3,250	53,252
Unrestricted	2,472,570	2,487,631
<i>Total Net Position</i>	<u>10,024,209</u>	<u>9,640,841</u>
<i>Total liabilities, deferred inflows of resources and net position</i>	<u>\$ 14,464,761</u>	<u>\$ 14,562,993</u>

The accompanying notes are an integral part of the basic financial statements.

WEST SLOPE WATER DISTRICT
WASHINGTON COUNTY, OREGON
STATEMENTS OF REVENUES, EXPENSES, AND CHANGES IN NET POSITION
For the Fiscal Years Ended June 30, 2018 and 2017

	<u>2018</u>	<u>2017</u>
OPERATING REVENUES		
Water service	\$ 3,101,349	\$ 2,873,040
Service installations	4,801	819
Penalties	6,605	6,429
Service modifications	4,021	4,749
Miscellaneous	576	438
Rights of way fees	39,135	20,385
Other	15,572	15,546
	<hr/>	<hr/>
<i>Total Operating Revenues</i>	3,172,059	2,921,406
OPERATING EXPENSES		
Salaries and wages	552,766	523,005
Payroll taxes and benefits	287,843	340,380
Water purchases	1,222,744	962,458
Repair and maintenance	87,890	107,297
Depreciation and amortization	367,989	337,117
Supplies	63,129	55,352
Utilities	14,006	16,431
Rights of way fees	39,173	20,499
Administration	58,117	67,093
Professional services	32,982	36,661
	<hr/>	<hr/>
<i>Total Operating Expenses</i>	2,726,639	2,466,293
<i>Operating Income</i>	445,420	455,113
NON-OPERATING REVENUES (EXPENSES)		
Interest income	46,827	33,164
Interest expense	(126,254)	(136,187)
Gain on disposition of assets	12,000	-
	<hr/>	<hr/>
<i>Net Non-Operating Revenues (Expenses)</i>	(67,427)	(103,023)
CAPITAL CONTRIBUTIONS	<hr/>	<hr/>
	5,375	2,688
CHANGE IN NET POSITION	383,368	354,778
NET POSITION, Beginning of Year	<hr/>	<hr/>
	9,640,841	9,286,063
NET POSITION, End of Year	<hr/> <hr/>	<hr/> <hr/>
	\$ 10,024,209	\$ 9,640,841

The accompanying notes are an integral part of the basic financial statements.

WEST SLOPE WATER DISTRICT
WASHINGTON COUNTY, OREGON
STATEMENTS OF CASH FLOWS
For the Fiscal Years Ended June 30, 2018 and 2017

	<u>2018</u>	<u>2017</u>
CASH FLOWS FROM OPERATING ACTIVITIES		
Received from customers	\$ 3,089,283	\$ 2,941,018
Payments to employees	(549,759)	(409,232)
Payments to suppliers for goods and services	(1,770,250)	(1,567,861)
	<hr/>	<hr/>
<i>Net Cash Provided by Operating Activities</i>	769,274	963,925
CASH FLOWS FROM CAPITAL AND RELATED FINANCING ACTIVITIES		
Capital asset purchases	(562,036)	(1,341,220)
Debt principal payments	(242,384)	(232,384)
Interest paid	(128,654)	(138,487)
Capital contributions	5,375	2,688
	<hr/>	<hr/>
<i>Net Cash Used by Capital and Related Financing Activities</i>	(927,699)	(1,709,403)
CASH FLOWS FROM INVESTING ACTIVITIES		
Interest received	46,827	33,164
	<hr/>	<hr/>
NET CHANGE IN CASH AND INVESTMENTS	(111,598)	(712,314)
CASH AND INVESTMENTS, Beginning of year	3,216,197	3,928,511
	<hr/>	<hr/>
CASH AND INVESTMENTS, End of year	\$ 3,104,599	\$ 3,216,197
	<hr/> <hr/>	<hr/> <hr/>
RECONCILIATION OF OPERATING INCOME TO NET CASH PROVIDED BY OPERATING ACTIVITIES		
Operating income	\$ 445,420	\$ 455,113
Adjustments		
Depreciation	367,989	337,117
Pension expense (income)	(9,109)	105,849
Decrease (increase) in:		
Accounts receivable	(81,782)	20,296
Prepaid expenses	(1,362)	(2,571)
Inventory	3,742	15,654
Increase (decrease) in:		
Accounts payable and accrued liabilities	33,254	25,227
Accrued payroll liabilities	4,404	2,963
Customer deposits	(994)	(684)
Compensated absences	7,129	1,147
Net OPEB obligation	14,623	9,160
Pension transitional liability	(14,040)	(5,346)
	<hr/>	<hr/>
<i>Net Cash Provided by Operating Activities</i>	\$ 769,274	\$ 963,925
	<hr/> <hr/>	<hr/> <hr/>
NONCASH CAPITAL AND RELATED FINANCING ACTIVITIES		
Value of asset from trade-in	\$ 12,000	\$ -

The accompanying notes are an integral part of the basic financial statements.

SUMMARY OF SIGNIFICANT ACCOUNTING POLICIES

The financial statements of the District have been prepared in accordance with Generally Accepted Accounting Principles (GAAP) as applied to government units in the United States of America. The Governmental Accounting Standards Board (GASB) is the accepted standard-setting body for establishing governmental accounting and financial reporting principles. The more significant of the district's accounting policies are described below.

Description of Reporting Entity

West Slope Water District is a municipal corporation governed by an elected five member board. The district was organized under provisions of Oregon Revised Statutes Chapter 264 for the purpose of operating a water district. All the District's activities are included in its financial statements. The District has no component units to consider for inclusion in its financial statements.

Basic Financial Statements Measurement Focus and Basis of Accounting

The District's accounting records are maintained on a fund accounting basis for budgetary and legal purposes; but, for financial reporting purposes, the financial statements are presented as a unitary enterprise operation, and as such, are reported as a single enterprise fund in the basic financial statements.

The District's financial statements are prepared on the accrual basis of accounting using the "economic resources" measurement focus. Under the accrual basis of accounting, revenues are recognized when earned and expenses are recognized when liabilities are incurred, regardless of the timing of the related cash flow. Accordingly, all assets and liabilities are reflected within the balance sheet with the equity section representing "total net position".

Proprietary funds distinguish operating revenues and expenses from non-operating items. Operating revenues and expenses generally result from providing services and producing and delivering goods in connection with a proprietary fund's principal ongoing operations. The principal operating revenues of the District are charges to customers for water sales. Operating expenses for proprietary funds include the cost of sales and services, administrative expenses, and depreciation on capital assets. All revenues and expenses not meeting this definition are reported as non-operating revenues and expenses.

Cash and Investments

For purposes of the statement of cash flows, cash and cash equivalents are defined as short-term, highly liquid investments that are both:

- a. Readily convertible to known amounts of cash.
- b. So near their maturity that they present insignificant risk of changes in value because of changes in interest rates.

Generally, only investments with original maturities of three months or less meet this definition.

The District follows GASB 72, which requires investments to be valued at fair value. The difference between cost and fair value was not material.

SUMMARY OF SIGNIFICANT ACCOUNTING POLICIES (Continued)

Accounts Receivable

Water revenues are recorded when earned. Residential and commercial billings are rendered on a monthly cycle. The District accrues estimated revenue for water used by customers, but not yet billed. An allowance for doubtful accounts is reviewed periodically for adequacy using an average of write-offs to water sales applied to the expected sales for the coming year.

Inventories

Inventory of materials is valued using the average-costing method of accounting.

Prepaid Insurance

Unexpired insurance premiums on policies in effect on June 30, 2018 are recorded as prepaid insurance and are recorded as expense when used.

Restricted Assets and Liabilities

Assets, the use of which is restricted to specific purposes by state statute, bond indenture, or other outside party, and related liabilities, are segregated on the Statement of Net Position.

Capital Assets

Capital assets, which include land and improvements, buildings and improvements, and equipment, are valued at cost. Water systems acquired before June 30, 1954, are valued at estimated cost as determined by a consulting engineer. All subsequent additions to the water systems are valued at cost. Donated capital assets, works of art and similar items, and capital assets received in service concession arrangements are recorded at their acquisition value on the date donated.

Capital assets are defined by the District as assets with an initial, individual cost of \$5,000 or more, and having useful lives extending beyond a single reporting period. Additions or improvements and other capital outlays that significantly extend the useful life of an asset, or that significantly increase the capacity of an asset are capitalized. Other costs incurred for repairs and maintenance are expensed as incurred.

Depreciation of capital assets has been recognized and reflected in the basic financial statements. Depreciation is not budgeted under the provisions of local budget law.

Asset	Years
Water Systems	50
Buildings & Improvements	39
Equipment & Software	5 - 20

Equipment and software includes heavy and light duty vehicles, water meters, office equipment, computers, and software. Depreciation for all categories is calculated on the straight-line method based upon management’s assessment of the estimated useful lives of the assets.

Monthly depreciation is taken in the year the assets are acquired or retired. Gains or losses from sales or retirements of capital assets are included in operations of the current period.

SUMMARY OF SIGNIFICANT ACCOUNTING POLICIES (Continued)

Compensated Absences

Vacation pay is vested when earned. Employees earn annual leave based on length of service to the District. As allowed by Code of Federal Regulations 29 553.21 for public employees, District employees are allowed to “bank” up to 240 hours of compensatory time off for overtime pay and pager duty pay. Unpaid vested vacation and “banked” compensatory time is shown as a current liability for compensated absences on the statement of net position and is recorded as an expense when earned. Vested vacation and accumulated compensatory pay are payable in full on demand and are recorded as a current liability. Sick pay does not vest and is recorded as expense when paid.

Deferred Outflows/Inflows of Resources

In addition to assets, the statement of net position will sometimes report a separate section for deferred outflows of resources. This separate financial statement element, *deferred outflows*, represents a consumption of net position that applies to a future period(s) and so will not be recognized as an outflow of resources until then. The District reports deferred outflow of resources related to pensions for contributions made after the June 30, 2017 measurement date.

In addition to liabilities, the statement of net position will sometimes report a separate section for deferred inflows of resources. This separate financial statement element, *deferred inflows*, represents an acquisition of net position that applies to a future period(s) and so will not be recognized as an inflow of resources until that time. The District reports deferred inflows related to pension for changes in projected earnings versus actual earnings and actual contributions versus proportionate share of contributions.

Long-term Obligations

Bond premiums and discounts are deferred and amortized over the life of the bonds using the straight-line method. Bonds payable are reported net of the applicable bond premium or discount. Bond issuance costs are reported as expense when incurred.

Use of Estimates

The preparation of financial statements in conformity with generally accepted accounting principles in the United States of America requires management to make estimates and assumptions that affect the reported amounts of assets and liabilities and disclosure of contingent assets and liabilities at the date of the financial statements and the reported amounts of revenues and expenses during the reporting period. Actual results could differ from those estimates.

Net Position

Net position comprises the various net earnings from operations, non-operating revenues, expenses and contributions of capital. Net position is classified in the following three categories.

Net investment in capital assets consists of all capital assets, net of accumulated depreciation and reduced by outstanding debt that is attributable to the acquisition, construction, and improvement of those assets.

Restricted consists of external constraints placed on net position use by creditors, grantors, contributors, or laws or regulations of other governments or constraints imposed by law through constitutional provisions or enabling legislation.

Unrestricted consists of the remaining net position that is not included in the other categories previously mentioned.

CASH AND CASH EQUIVALENTS

At June 30, 2018, investments included in cash and cash equivalents consisted of:

	<u>Weighted Average Maturity (Years)</u>	<u>Cost/ Fair Value</u>
Investments in the State Treasurer's Local Government Investment Pool	<u>0.00</u>	<u>\$2,624,493</u>

At June 30, 2017, investments included in cash and cash equivalents consisted of:

	<u>Weighted Average Maturity (Years)</u>	<u>Cost/ Fair Value</u>
Investments in the State Treasurer's Local Government Investment Pool	<u>0.00</u>	<u>\$2,934,524</u>

Interest Rate Risk

The District does not have a formal investment policy that limits investment maturities as a means of managing its exposure to fair value losses arising from increasing interest rates.

Credit Risk

State statutes authorize the District to invest in general obligations of the U.S. Government and its agencies, certain bonded obligations of Oregon municipalities, bank repurchase agreements, bankers' acceptances, and the State Treasurer's Oregon Local Government Investment Pool, among others. The District has no investment policy that would further limit its investment choices.

Concentration Of Credit Risk

The District does not currently have an investment policy for concentration of credit risk. The State Treasurer's Investment Pool operates in accordance with appropriate state laws and regulations, but is not regulated by other laws, organizations or regulations. The reported value of the Pool is the same as the fair value of Pool shares. Investments are regulated by the Oregon Short-Term Fund Board and approved by the Oregon Investment Council (ORS 294.805 to 294.895). The Pool is not registered with the SEC as an investment company and is unrated.

Custodial Credit Risk – Deposits

This is the risk that in the event of a bank failure, the District's deposits may not be returned. As of June 30, 2018, and June 30, 2017 the book values of the District's bank deposits were \$479,656 and \$281,223 and the bank balances were \$493,336 and \$283,884. \$250,000 of the bank balance was covered by FDIC insurance. As required by Oregon Revised Statutes, the deposits in excess of federal depository insurance were held at a qualified depository for public funds. All qualified depositories for public funds are included in the multiple financial institution collateral pool that is maintained by and in the name of the Office of the State Treasurer. As a result the District's remaining deposits in excess of FDIC insurance are considered to be fully collateralized.

WEST SLOPE WATER DISTRICT
NOTES TO BASIC FINANCIAL STATEMENTS
June 30, 2018 and 2017

ACCOUNTS RECEIVABLE – WATER SERVICE

The District bills water users monthly. The water service receivables at June 30, 2018 and 2017 were \$298,346 and \$340,032 respectively. At June 30, 2018 and 2017 the District had no recorded allowance for uncollectible accounts.

CAPITAL ASSETS

The changes in Capital Assets for the year ended June 30, 2018 are summarized below:

	<i>2018</i> <i>Beginning</i> <i>Balance</i>	<i>Additions</i>	<i>Deletions</i>	<i>2018</i> <i>Ending</i> <i>Balance</i>
Capital Assets, non-depreciable:				
Land	\$ 44,724	\$ -	\$ -	\$ 44,724
Construction in progress	1,451,305	487,503	(1,930,508)	8,300
Total capital assets, non-depreciable	<u>1,496,029</u>	<u>487,503</u>	<u>(1,930,508)</u>	<u>53,024</u>
Capital assets, depreciable:				
Buildings	354,306	10,418	-	364,724
Water Systems	13,381,713	1,930,508	-	15,312,221
Equipment	913,114	76,115	(24,040)	965,189
Total capital assets, depreciable	<u>14,649,133</u>	<u>2,017,041</u>	<u>(24,040)</u>	<u>16,642,134</u>
Less: accumulated depreciation				
Buildings	(151,683)	(10,620)	-	(162,303)
Water Systems	(5,204,736)	(301,203)	-	(5,505,939)
Equipment	(453,351)	(56,166)	24,040	(485,477)
Total accumulated depreciation	<u>(5,809,770)</u>	<u>(367,989)</u>	<u>24,040</u>	<u>(6,153,719)</u>
Net depreciable capital assets	<u>8,839,363</u>	<u>1,649,052</u>	<u>-</u>	<u>10,488,415</u>
Net capital assets	<u>\$ 10,335,392</u>	<u>\$ 2,136,555</u>	<u>\$ (1,930,508)</u>	<u>\$ 10,541,439</u>

WEST SLOPE WATER DISTRICT
NOTES TO BASIC FINANCIAL STATEMENTS
June 30, 2018 and 2017

CAPITAL ASSETS (Continued)

The changes in Capital Assets for the year ended June 30, 2017 are summarized below:

	2017 Beginning Balance	Additions	Deletions	2017 Ending Balance
Capital Assets, non-depreciable:				
Land	\$ 44,724	\$ -	\$ -	\$ 44,724
Construction in progress	142,113	1,309,192	-	1,451,305
Total capital assets, non-depreciable	<u>186,837</u>	<u>1,309,192</u>	<u>-</u>	<u>1,496,029</u>
Capital assets, depreciable:				
Buildings	354,306	-	-	354,306
Water Systems	13,381,713	-	-	13,381,713
Equipment	881,086	32,028	-	913,114
Total capital assets, depreciable	<u>14,617,105</u>	<u>32,028</u>	<u>-</u>	<u>14,649,133</u>
Less: accumulated depreciation				
Buildings	(141,063)	(10,620)	-	(151,683)
Water Systems	(4,934,599)	(270,137)	-	(5,204,736)
Equipment	(396,991)	(56,360)	-	(453,351)
Total accumulated depreciation	<u>(5,472,653)</u>	<u>(337,117)</u>	<u>-</u>	<u>(5,809,770)</u>
Net depreciable capital assets	<u>9,144,452</u>	<u>(305,089)</u>	<u>-</u>	<u>8,839,363</u>
Net capital assets	<u>\$ 9,331,289</u>	<u>\$ 1,004,103</u>	<u>\$ -</u>	<u>\$ 10,335,392</u>

The cost of certain water mains and service installations since July 1, 1973 has been financed by contributions from persons requesting the extensions. Records are not adequate to determine amounts prior to July 1, 1973.

WEST SLOPE WATER DISTRICT
NOTES TO BASIC FINANCIAL STATEMENTS
June 30, 2018 and 2017

LONG-TERM DEBT

During the year ended June 30, 2018, long-term debt activity was as follows:

	2018			2018		
	Beginning Balance	Additions	Deletions	Ending Balance	Due within one year	Due in More Than one year
Bonds	\$ 3,210,000	\$ -	\$ (240,000)	\$ 2,970,000	\$ 250,000	\$ 2,720,000
Bond premiums	25,434	-	(2,384)	23,050	2,384	20,666
Total bonds payable	<u>\$ 3,235,434</u>	<u>\$ -</u>	<u>\$ (242,384)</u>	<u>\$ 2,993,050</u>	<u>\$ 252,384</u>	<u>\$ 2,740,666</u>

During the year ended June 30, 2017, long-term debt activity was as follows:

	2017			2017		
	Beginning Balance	Additions	Deletions	Ending Balance	Due within one year	Due in More Than one year
Bonds	\$ 3,440,000	\$ -	\$ (230,000)	\$ 3,210,000	\$ 240,000	\$ 2,970,000
Bond premiums	27,818	-	(2,384)	25,434	2,384	23,050
Total bonds payable	<u>\$ 3,467,818</u>	<u>\$ -</u>	<u>\$ (232,384)</u>	<u>\$ 3,235,434</u>	<u>\$ 242,384</u>	<u>\$ 2,993,050</u>

Water Revenue Bonds

In February 2008, the District issued \$5,000,000 of revenue bonds to finance the costs of additions, replacements, expansions and/or improvements to the District’s water system. The District pledges income derived from the constructed assets to pay for the debt. Revenue bonds outstanding at year end are as follows:

<u>Purpose</u>	<u>Interest Rates</u>	<u>Original Issue Amount</u>
Reservoir 3	3.5% - 4%	\$5,000,000

Revenue bond debt service requirements to maturity are as follows:

Fiscal Year	Revenue Bond		
	Principal	Interest	Total
2019	\$ 250,000	\$ 116,856	\$ 366,856
2020	260,000	107,681	367,681
2021	270,000	98,756	368,756
2022	280,000	89,279	369,279
2023	290,000	79,241	369,241
2024-2028	1,620,000	226,722	1,790,845
	<u>2,970,000</u>	<u>\$ 718,535</u>	<u>\$ 3,632,658</u>
Bond premium	23,050		
	<u>\$ 2,993,050</u>		

LONG-TERM DEBT (Continued)

The interest rate for the revenue bond debt service is as follows:

<u>Periods Ending</u>	<u>Interest Rate</u>
2016-2018	4.000%
2019-2020	3.500%
2021-2022	3.650%
2023-2024	3.750%
2025-2026	3.875%
2027-2028	4.000%

Covenants

The bonds are subject to certain operational and financial requirements which include financial reporting, maintaining insurance, complying with all safety and environmental regulations, restrictions on the sale or transfer of property, and restrictions on the minimum rates charged for water. In addition, the District has three primary financial covenants. The District must establish and maintain rates and fees in connection with the operation of the water system which when combined with other gross revenues, are adequate to generate net revenues at least equal to 125% of the annual debt service, and net revenue excluding SDC revenues at least equal to 115% of the annual debt service. The District met these financial requirements for the years ended June 30, 2018 and 2017.

Effective June 20, 2018 the Board authorized the establishment of a rate stabilization account as is allowed by the Bond Master Resolution and Official Statement. The rate stabilization account can be used at the discretion of the District to meet the requirements of the rate covenants by transferring funds into the rate stabilization account in years when net revenues generated exceed the required debt service coverage and funds may be transferred out of the rate stabilization account to supplement revenues and smooth rate increases.

PENSION PLAN – OREGON PUBLIC EMPLOYEES RETIREMENT SYSTEM

Plan Description

Substantially all District employees are members in the Oregon Public Employees Retirement System (OPERS); a cost-sharing multiple-employer defined benefit and defined contribution pension plan that acts as a common investment and administrative agent for government units in the State of Oregon. Employees hired before August 29, 2003 belong to the Tier One/Tier Two Retirement Benefit Program (established pursuant to ORS Chapter 238), while employees hired on or after August 29, 2003 belong to the OPSRP Pension Program (established pursuant to ORS Chapter 238A). OPERS produces an independently audited CAFR which can be found at: <https://www.oregon.gov/pers/EMP/Pages/Actuarial-Financial-Information.aspx>.

Benefits Provided

Tier One/Tier Two Pension Program

Pension Benefits. The PERS retirement allowance is payable monthly for life. It may be selected from 13 retirement benefit options. These options include survivorship benefits and lump-sum refunds. The basic benefit is based on years of service and final average salary. A percentage (1.67% for general service employees) is multiplied by the number of years of service and the final average salary. Benefits may also be calculated under either a formula plus annuity (for members who were contributing before August 21, 1981), or a money match computation, if a greater benefit results.

A member is considered vested and will be eligible at a minimum retirement age for a service retirement allowance if he or she has had contribution in each of five calendar years or has reached at least 50 years of age before ceasing employment with a participating employer. General Service employees may retire after reaching age 55. Tier One general service employee benefits are reduced if retirement occurs prior to age 58 with fewer than 30 years of service. Tier Two members are eligible for full benefits at age 60. The ORS Chapter 238 Defined Benefit Pension Plan is closed to new members hired on or after August 29, 2003.

Death Benefits. Upon the death of a non-retired member, the beneficiary receives a lump-sum refund of the member's account balance (accumulated contributions and interest). In addition, the beneficiary will receive a lump-sum payment from employer funds equal to the account balance, provided one or more of the following conditions are met:

- the member was employed by a PERS employer at the time of death,
- the member died within 120 days after termination of PERS-covered employment,
- the member died as a result of injury sustained while employed in a PERS-covered job, or
- the member was on an official leave of absence from a PERS-covered job at the time of death.

Disability Benefits. A member with 10 or more years of creditable service who becomes disabled from other than duty-connected causes may receive a non-duty disability benefit. A disability resulting from a job-incurred injury or illness qualifies a member for disability benefit regardless of the length of PERS-covered service. Upon qualifying for either a non-duty or duty disability, service time is computed to age 58 when determining the monthly benefit.

Benefit Changes After Retirement. Members may choose to continue participation in a variable equities investment account after retiring and may experience annual benefit fluctuations due to changes in the market value of equity investments. Under ORS 238.360 monthly benefits are adjusted annually for Cost of Living Adjustments (COLA) based on the Portland Consumer Price Index. The COLA is capped at 2% annually.

WEST SLOPE WATER DISTRICT
NOTES TO BASIC FINANCIAL STATEMENTS
June 30, 2018 and 2017

Oregon Public Service Retirement Plan (OPSRP):

The 2003 Oregon legislature enacted HB 2020, codified as ORS 238A, which created the Oregon Public Service Retirement Plan (OPSRP). OPSRP consists of the defined benefit Pension Program and the defined contribution Individual Account Program (IAP). Membership in the Pension Program includes public employees hired on or after August 29, 2003. Beginning January 1, 2004 PERS active Tier One and Tier Two members also became members of the IAP portion of OPSRP. PERS members retain their existing Regular or Variable accounts, but member contributions are now deposited into the member's defined contribution IAP account.

Pension Benefits. This portion of OPSRP provides a life pension funded by employer contributions. Benefits are calculated by formula for members who attain normal retirement age. For general service members, 1.5% is multiplied by the number of years of service and the final average salary. Normal retirement age for general service members is age 65, or age 58 with 30 years of retirement credit. A member of the OPSRP Pension Program becomes vested on the earliest of the following dates: the date the member completes 600 hours of service in each of five calendar years, the date the member reaches normal retirement age, and if the pension program is terminated, the date on which termination becomes effective.

Death Benefits. Upon the death of a non-retired member, the spouse or other person who is constitutionally required to be treated in the same manner as the spouse receives, for life, 50 percent of the pension that would otherwise have been paid to the deceased member.

Disability Benefits. A member who has accrued 10 or more years of retirement credits before the member becomes disabled or a member who becomes disabled due to job-related injury shall receive a disability benefit of 45 percent of the member's salary determined as of the last full month of employment before the disability occurred.

Benefit Changes After Retirement. Under ORS 238A.210 monthly benefits are adjusted annually through cost-of-living changes. Under current law, the cap on the COLA for service on or before October 1, 2013 is 2% annually, for service subsequent to October 1, 2013 the COLA is capped at 1.25% on the first \$60,000 of annual benefits and .15% on annual benefits above \$60,000.

Contributions

PERS funding policy provides for monthly employer contributions at actuarially determined rates. These contributions, expressed as a percentage of covered payroll, are intended to accumulate sufficient assets to pay benefits when due. Employer contribution rates for the period were based on the December 31, 2015 actuarial valuation. The rates based on a percentage of payroll, first became effective July 1, 2017. The District's contribution rates for the period excluding the employee paid 6% to IAP and the employer paid 5.63% pension transitional liability principal and interest were 24.85% for Tier One/Tier Two members, and 15.32% for OPSRP General Service members. The District's contribution excluding 5.63% paid for the transitional liability, .06% paid for RHIA (see below other postemployment benefits), and employee paid 6% for IAP, was \$102,468 in fiscal year ended June 30, 2018, and \$74,891 in fiscal year ended June 30, 2017.

Covered employees are required to contribute 6% of their salary to the Plan, but the employer is allowed to pay any or all of the employees' contribution in addition to the required employers' contribution. The District has elected not to contribute the 6% employee IAP contribution.

WEST SLOPE WATER DISTRICT
NOTES TO BASIC FINANCIAL STATEMENTS
June 30, 2018 and 2017

Pension Assets, Liabilities, Pension Expense, and Deferred Outflows of Resources and Deferred Inflows of Resources Related to Pensions

Upon joining the State and Local Government Rate Pool, SLGRP on January 1, 2002 a transition liability was calculated to ensure the District entered the pool on a comparable basis. The transition liability is maintained separately from the SLGRP, and is reduced by separately assessed contributions based on payroll and is increased for interest charges. The employer contribution rate at June 30, 2018 was 5.63%, and at June 30, 2017 was 3.97% of covered payroll. At June 30, 2018 and 2017 the District reported a transitional liability balance of \$186,632 and \$200,672.

At June 30, 2018 and 2017 respectively, the District reported a liability of \$652,438 and \$1,088,476 for its proportionate share of the State and Local Government Rate Pool (SLGRP), OPERS net pension asset/liability. The net pension liability was measured as of June 30, 2017, and the total pension liability used to calculate the net pension liability was determined by an actuarial valuation as of December 31, 2015 rolled forward to June 30, 2017. The District's proportion of the net pension asset/liability was based on a projection of the District's long-term share of contributions to the pension plan relative to the projected contributions of all participating employers, actuarially determined. At the June 30, 2017 measurement date (used for June 30, 2018 reporting), the District's proportion was 0.484%, which is a decrease from its proportionate share of 0.725% measured as of June 30, 2016 (used for June 30, 2017 reporting).

For the years ended June 30, 2018 and June 30, 2017, the District recognized pension expense of \$95,562, and \$180,741 respectively.

At June 30, 2018, the District reported deferred outflows of resources and deferred inflows of resources related to pensions from the following sources:

	<i>Deferred Outflows of Resources</i>	<i>Deferred Inflows of Resources</i>
	<u> </u>	<u> </u>
Differences between expected and actual experience	\$ 31,552	\$ -
Changes in assumptions	118,928	-
Net difference between projected and actual earnings on investments	6,722	-
Changes in proportionate share	4,157	188,561
Differences between employer contributions and employer's proportionate share of system contributions	45,653	1,806
Contributions subsequent to measurement date	102,468	-
	<u> </u>	<u> </u>
Total	<u>\$ 309,480</u>	<u>\$ 190,367</u>

WEST SLOPE WATER DISTRICT
NOTES TO BASIC FINANCIAL STATEMENTS
June 30, 2018 and 2017

Deferred outflows of resources resulting from the District's contributions subsequent to the measurement date of \$102,468 included above will be recognized as either a reduction of the net pension liability or an increase in the net pension asset in the year ended June 30, 2019.

The amounts other than subsequent contributions reported above as deferred inflows and outflows of resources related to pensions will be recognized in pension expense in the following years:

<i>Fiscal Year Ending June 30,</i>	
2019	\$ (651)
2020	51,080
2021	21,536
2022	(47,217)
2023	(8,103)
Thereafter	-
Total	<u><u>\$ 16,645</u></u>

At June 30, 2017 the District reported deferred outflows of resources and deferred inflows of resources related to pensions from the following sources:

	<i>Deferred Outflows of Resources</i>	<i>Deferred Inflows of Resources</i>
Differences between expected and actual experience	\$ 36,012	\$ -
Changes in assumptions	232,146	-
Net difference between projected and actual earnings on investments	215,037	-
Changes in proportionate share	5,888	32,962
Differences between employer contributions and employer's proportionate share of system contributions	17,589	2,559
Contributions subsequent to measurement date	74,891	-
Total	<u><u>\$ 581,563</u></u>	<u><u>\$ 35,521</u></u>

Deferred outflows of resources related to pensions resulting from the District's contributions subsequent to the measurement date of \$74,891 were recognized as a reduction of the net pension liability in the year ended June 30, 2018.

WEST SLOPE WATER DISTRICT
NOTES TO BASIC FINANCIAL STATEMENTS
June 30, 2018 and 2017

Actuarial Methods and Assumptions

The total pension liability in the December 31, 2015 actuarial valuation was determined using the following actuarial methods and assumptions:

Valuation Date	December 31, 2015
Measurement Date	June 30, 2017
Experience Study	2014, published September 2015
Actuarial Cost Method	Entry Age Normal
Amortization Method	UAL is amortized as a level percentage of combined valuation payroll (Tier one/Tier two plus OPSRP payroll) over 20 years for Tier 1/Tier 2 and over 16 years for OPSRP.
Asset Valuation Method	Market value of assets
Actuarial Assumptions:	
Inflation Rate	2.50%
Long-term expected rate of return	7.50%
Discount rate	7.50%
Projected Salary Increases	3.5% compounded annually
Mortality	<p>Healthy retirees and beneficiaries: RP-2000 Sex-distinct, generational per Scale BB, with collar adjustments and set-backs as described in the valuation.</p> <p>Active members: Mortality rates are a percentage of healthy retiree rates that vary by group, as described in the valuation.</p> <p>Disabled retirees: Mortality rates are a percentage (70% for males, 95% for females) of the RP-2000 Sex-distinct, generational per Scale BB, disabled mortality table</p>

Actuarial valuations of an ongoing plan involve estimates of the value of projected benefits and assumptions about the probability of events far into the future. Actuarially determined amounts are subject to continual revision as actual results are compared to past expectations and new estimates are made about the future. Experience studies are performed as of December 31 of even numbered years. The methods and assumptions shown above are based on the 2014 experience study which reviewed experience for the four-year period ending on December 31, 2014.

WEST SLOPE WATER DISTRICT
NOTES TO BASIC FINANCIAL STATEMENTS
June 30, 2018 and 2017

Long-Term Expected Rate of Return

To develop an analytical basis for the selection of the long-term expected rate of return assumption, in July 2015 the PERS Board reviewed long-term assumptions developed by both Milliman’s capital market assumptions team and the Oregon Investment Council’s (OIC) investment advisors. The table below shows Milliman’s assumptions for each of the asset classes in which the plan was invested at that time based on the OIC long-term target asset allocation. The OIC’s description of each asset class was used to map the target allocation to the asset classes shown below. Each asset class assumption was based on a consistent set of underlying assumptions, and includes adjustment for the inflation assumption. These assumptions are not based on historical returns, but instead are based on a forward-looking capital market economic model.

<u>Asset Class</u>	<u>Target</u>	<u>Compound Annual Return (Geometric)</u>
Core Fixed Income	8.00 %	4.00 %
Short-Term Bonds	8.00	3.61
Bank/Leveraged Loans	3.00	5.42
High Yield Bonds	1.00	6.20
Large/Mid Cap US Equities	15.75	6.70
Small Cap US Equities	1.31	6.99
Micro Cap US Equities	1.31	7.01
Developed Foreign Equities	13.13	6.73
Emerging Market Equities	4.12	7.25
Non-US Small Cap Equities	1.88	7.22
Private Equity	17.50	7.97
Real Estate (Property)	10.00	5.84
Real Estate (REITS)	2.50	6.69
Hedge Fund of Funds - Diversified	2.50	4.64
Hedge Fund - Event-driven	0.63	6.72
Timber	1.88	5.85
Farmland	1.88	6.37
Infrastructure	3.75	7.13
Commodities	1.88	4.58
Assumed Inflation - Mean		2.50

Discount Rate

The discount rate used to measure the total pension liability at June 30, 2018 and 2017 was 7.5% for the Defined Benefit Pension Plan. The projection of cash flows used to determine the discount rate assumed that contributions from plan members and those contributing employers are made at the contractually required rates, as actuarially determined. Based on those assumptions, the pension plan’s fiduciary net position was projected to be available to make all projected future benefit payments of current plan members. Therefore, the long-term expected rate of return on pension plan investments for the Defined Benefit Pension Plan was applied to all periods of projected benefit payments to determine the total pension liability.

WEST SLOPE WATER DISTRICT
NOTES TO BASIC FINANCIAL STATEMENTS
June 30, 2018 and 2017

Sensitivity Of The District’s Proportionate Share Of The Net Pension Liability To Changes In The Discount Rate

The following presents the District’s proportionate share of the net pension liability (asset) as of the June 30, 2017 measurement date and as of the June 30, 2016 measurement date. Both periods were measured utilizing the discount rate of 7.5%. The table also shows what the District’s proportionate share of the net pension liability (asset) would be if it were calculated using a discount rate that is 1-percentage-point lower (6.5%) or 1-percentage-point higher (8.5%) than the current rate.

	Proportionate share of the net pension liability/(asset):	
Measurement Date	6/30/2017	6/30/2016
Reporting Date	6/30/2018	6/30/2017
Discount Rate	7.5%	7.5%
Proportionate share at above rate	\$ 652,438	\$ 1,088,476
Proportionate share at 1% decrease	1,111,873	1,757,526
Proportionate share at 1% increase	268,265	529,267

Pension Plan Fiduciary Net Position

Detailed information about the pension plan’s fiduciary net position is available in the separately issued OPERS financial report at <https://www.oregon.gov/pers/EMP/Pages/Actuarial-Financial-Information.aspx>.

POST-EMPLOYMENT BENEFITS OTHER THAN PENSIONS

Fiscal year 2018 (post-implementation of GASB Statement No. 75)

On July 1, 2017, the District implemented GASB Statement No. 75, Accounting and Financial Reporting for Postemployment Benefits Other Than Pensions, which replaces the requirements of GASB Statement No. 45, Accounting and Financial Reporting by Employers for Postemployment Benefits Other Than Pensions, as amended. Specifically, Statement No. 75 recognizes the long-term obligation for health and life insurance benefits offered to retirees. Due to its immaterial nature the District elected to book the \$6,250 of prior years’ OPEB which resulted from the implementation of GASB 75 as current year expense resulting in total OPEB expense for the year of \$14,623.

Implicit Subsidy Plan description

The District provides subsidized health benefits to retirees under age 65, as required by ORS 243.303. Under ORS 243.303 retirees electing to remain on the District-sponsored health plans may pay all or a portion of the premium in order to maintain coverage. Even when the District does not directly contribute to the cost of the premium for these retirees, the premium itself does not represent the full cost of covering these retirees (since they are older than the active population, retirees can be expected to generate higher medical claims and therefore higher premiums for the active population). This additional cost is called the “implicit rate subsidy”, and is required to be valued under GASB Statement 75 (GASB 75).

The plan does not have a separate report, and no assets are accumulated into a trust.

WEST SLOPE WATER DISTRICT
NOTES TO BASIC FINANCIAL STATEMENTS
June 30, 2018 and 2017

Benefits Provided:

Retirement Eligibility: To be eligible for health insurance continuation under ORS 243.303, retirees must be receiving benefits from Oregon PERS. The Oregon PERS eligibility requirements to begin receiving retirement benefits for Tier 1 or Tier 2 members are the earlier of age 55, or any age with 30 years of service, for OPSRP members the requirements are age 55 with 5 years of service. The OPEB benefit applies to all classes of District employees and covers qualified spouses, domestic partners, and children. Employees electing to remain on the District’s sponsored health care plan pay the entire premium to maintain coverage. The current monthly health care premium for plan members at June 30, 2018 was:

Single	\$ 609
Employee&Children	1,127
Couple	1,218
Family	1,736

Employees covered by benefit terms: At June 30, 2018, the following employees were covered by the benefit terms:

- Active Employees - 7
- Retired Employees Utilizing Coverage - 0
- Retired Employees Eligible for Coverage - 0

Funding Policy

Retirees pay the entire cost of the premium at blended rates. The District’s only contribution is the implicit rate subsidy which continues to be financed on a pay-as-you-go basis. The District’s Board of Commissioners and the Oregon State Legislature have the authority to establish or amend the funding policy.

WEST SLOPE WATER DISTRICT
NOTES TO BASIC FINANCIAL STATEMENTS
June 30, 2018 and 2017

Actuarial Assumptions and Other Inputs

The June 30, 2017 actuarial valuation upon which the June 30, 2018 OPEB liability is based, was determined using the following actuarial assumptions and other inputs.

Valuation Date	July 1, 2017
Measurement Date	June 30, 2018
Actuarial Cost Method	Entry Age Normal, level percent of salary
Inflation Rate	2.50%
Discount rate	3.5% based on the municipal bond rate
Projected Salary Increases	3.5% plus Salary Merit Scale below.
Mortality	Basic Table RP 2014, Employoy/Health Annuitant, sex distinct, generation Improvement Scale: Unisex Social Security Data Scale (60 year average) Male Adjustments: Blended 50% blue collar/50% white collar, set back 12 months. Female Adjustments: Blended 50% blue collar/50% white collar, no set back.

Salary Merit Scale:	Duration	Increase
	0	3.38%
	5	1.94%
	10	0.99%
	15	0.43%
	20	0.14%
	25	0.02%
	30+	-0.04%

Annual Premium Increase	Year	Rate
	2017-18	6.40%
	2018-19	6.30%
	2019-20	6.20%
	2020-21	6.10%
	2021-22	6.00%
	2022-23	5.90%
	2023-24	5.80%
	2024-25	5.70%
	2025-26	5.60%
	2026-27	5.50%
	2027-28	5.40%
	2028-29	5.30%
	2029-30	5.20%
	2030-31	5.10%
	2031+	5.00%

Changes in the Total OPEB Liability

WEST SLOPE WATER DISTRICT
NOTES TO BASIC FINANCIAL STATEMENTS
June 30, 2018 and 2017

Balance at June 30, 2017	\$	70,038
Changes for the year:		
Service Cost		5,730
Interest		2,549
Changes of benefit terms		-
Differences between expected and actual experience		-
Changes of assumptions or other input		-
Benefit payments		(176)
Net changes		<u>8,103</u>
Balance at June 30, 2018	\$	<u>78,141</u>

Sensitivity of the Net OPEB Liability to Changes in the Discount Rate		
1% Decrease	\$	84,687
1% Increase		72,172

Sensitivity of the Net OPEB Liability to Changes in the Healthcare Cost Trend Rate		
1% Decrease	\$	69,245
1% Increase		89,097

OPEB Expense and Deferred Outflows of Resources and Deferred Inflows of Resources Related to OPEB

For the year ended June 30, 2018, the District recognized OPEB expense of \$14,623.

At June 30, 2018 and June 30, 2017 the District reported \$0 and \$0, respectively of deferred outflows of resources and deferred inflows of resources related to OPEB from all sources.

Retirement Health Insurance Account (RHIA)

The District's total RHIA OPEB liability and amounts required by GASB 75 are immaterial to the District's financials and are therefore amounts are not included in the Financial Statements or the footnotes. A description of the plan and benefits provided is below.

Plan Description

As a member of Oregon Public Employees Retirement System (OPERS), the District contributes to the Retirement Health Insurance Account (RHIA) for each of its eligible T1/T2 employees. RHIA is a cost-sharing defined benefit multiple-employer other post-employment benefit plan administered by the OPERS trust. Oregon Revised Statute (ORS) 238.420 established this trust fund. OPERS issues a publicly available financial report that includes financial statements and required supplementary information. That report is available at <https://www.oregon.gov/pers/EMP/Pages/Actuarial-Financial-Information.aspx>.

Benefits Provided

ORS require that an amount equal to \$60 or the total monthly cost of Medicare companion health insurance premiums coverage, whichever is less, shall be paid from the RHIA established by the employer, and any monthly cost in excess of \$60 shall be paid by the eligible retired member in the manner provided in ORS 238.410.

Authority to establish and amend the benefit provision of RHIA resides with the Oregon Legislature. Because RHIA was created by enabling legislation (ORS 238.420), contribution requirements of the plan members and the participating employers were established and may be amended only by the Oregon Legislature. The plan is closed to new entrants after January 1, 2004.

Retirement Eligibility

To be eligible to receive this monthly payment toward the premium cost the member must: (1) have eight years or more of qualifying creditable service in PERS, (2) receive both Medicare Parts A and B coverage, and (3) enroll in a PERS-sponsored health plan. A surviving spouse or dependent of a deceased PERS retiree who was eligible to receive the subsidy is eligible if he or she (1) is receiving a retirement benefit or allowance from PERS or (2) was insured at the time the member died and the member retired before May 1, 1991.

Funding Policy

RHIA funding policy provides for monthly employer contributions at actuarially determined rates. These contributions, expressed as a percentage of covered payroll, are intended to accumulate sufficient assets to pay benefits when due. Employer contribution rates for the period were based on the December 31, 2015 actuarial valuation. The rates first became effective July 1, 2017. The District's contributions in fiscal year ended June 30, 2018 and June 30, 2017 respectively were \$2,377 and \$2,568.

DEFERRED COMPENSATION

The District offers its employees a deferred compensation plan created in accordance with Internal Revenue Code Section 457. The plan, available to all district employees, permits them to defer a portion of their salary until future years. The deferred compensation is not available to employees until termination, retirement, death, or unforeseeable emergency. All amounts of compensation deferred under the plan, are held in trust by the plan administrator for the sole benefit of the participants.

LAND USE AGREEMENT

In June 1994, the District transferred property to the Tualatin Hills Park and Recreation District for the purpose of a neighborhood park. If the property is used for any purpose other than a park, the land will revert back to the possession of West Slope Water District, and cause a sale thereof with all proceeds going directly to the District.

RISK MANAGEMENT

The District is exposed to various risks of loss related to torts; theft of, damage to, and destruction of assets; errors and omissions; injuries to employees; and natural disasters. The District purchases commercial insurance to minimize its exposure to these risks. Settled claims have not exceeded this commercial coverage in any of the past three years.

INTERGOVERNMENTAL AGREEMENT

The District and the City of Beaverton have an intergovernmental agreement (IGA) related to the withdrawal of service territory from the District into the City of Beaverton. The City of Beaverton withdrew approximately 5% of the District's service territory in May 2009. The IGA states the City of Beaverton will provide debt service reimbursement to the District of approximately \$15,000 annually until year 2028 when the last bond payment is due or a mutually agreed upon lump sum payment.

In addition, the IGA states the City of Beaverton has agreed to pay the District for a portion of unclaimed water the District would have sold to the withdrawn territory. This is to help offset the expense incurred by the District from the minimum purchase agreement in the District's 20 year Regional Water Sales Agreement with City of Portland. For the years ended June 30, 2018, and June 30, 2017 the amounts of debt service reimbursement totaled \$15,572, and \$15,546 respectively, and water reimbursement was \$40,283 and \$38,206 respectively.

ADOPTION OF NEW GASB PRONOUNCEMENTS:

Adopted

GASB Statement No. 75, "Accounting and Financial Reporting for Postemployment Benefits Other than Pensions," addresses reporting by governments that provide OPEB to their employees and for governments that finance OPEB for employees of other governments. It requires governments in all types of OPEB plans to present more extensive note disclosures and required supplementary information (RSI) about their OPEB liabilities. The statement is effective for fiscal years beginning after June 15, 2017. This statement was implemented in the current year.

The revalued June 30, 2017 total OPEB liability for the District's implicit rate subsidy for health benefits provided to retirees is immaterial to the District's financials as a whole and is therefore included as a part of the current years OPEB expense, rather than a restatement of beginning net position.

The amounts representing the District's portion of the OPEB liability and expense under the cost sharing RHIA OPEB plan administered by the OPERS trust, are immaterial and therefore are not recorded in the District's financial statements. The note disclosure describes the plan and its benefits, and the expense incurred during the year.

GASB Statement No. 89 "Accounting for Interest Incurred before the End of a Construction Period" This Statement requires that interest cost incurred before the end of a construction period be recognized as an expense in the period in which the cost is incurred for financial statements of business-type activities. Current year implementation of this statement resulted in \$9,708 of FY 2018 interest being recorded as expense rather than being capitalized under pre-GASB 89 treatment.

Future adoption of GASB pronouncements

GASB Statement No. 87 "Leases" defines criteria under which certain leases are required to be recognized as a lease liability and an intangible right-to-use lease assets. The statement is effective for fiscal years beginning after December 15, 2019 or fiscal year ending June 30, 2021. While the District will be required to restate payments for certain of its lease obligations the District has not assessed the monetary impact to the financials based on the requirements of this statement.

The District will implement new GASB pronouncements no later than the required fiscal year. The District is currently evaluating whether or not the above pronouncements will have a significant impact to the District' financial statements.

CONTINGENCIES

Litigation

The District is involved in litigation for work completed in August 2017 under the construction contract to seismically upgrade the District's Green Tank. The Contractor is disputing \$76,125 of liquidated damages withheld by the District from the project retainage. The District has calculated liquidated damages as per the signed construction contract based on a 113 day delay in meeting the substantial completion deadline set forth in the contract. It is the opinion of District management that the matter will be settled in favor of the District.

SUBSEQUENT EVENTS

Management has evaluated subsequent events through December 12, 2018, the date on which the financial statements were available to be issued. Management is not aware of any subsequent events that require recognition or disclosure in the financial statements.

REQUIRED SUPPLEMENTAL INFORMATION

WEST SLOPE WATER DISTRICT
SCHEDULE OF CHANGES IN TOTAL OPEB LIABILITY AND RELATED RATIOS
CURRENT FISCAL YEAR**

Other Post-employment Benefits
Retiree Medical Benefit Implicit Rate Subsidy

	2018
Total OPEB Liability - Beginning	\$ 70,038
Changes for the year:	
Service Cost	5,730
Interest	2,549
Changes of benefit terms	-
Differences between expected and actual experience	-
Changes of assumptions or other input	-
Benefit payments	(176)
Net changes	8,103
Total OPEB Liability - Ending	\$ 78,141
Covered Payroll	\$ 552,766
Total OPEB Liability as a Percentage of Covered Payroll	14.14%

No assets for this plan are accumulated into a trust that meets the criteria in paragraph 4 of GASB75. The District funds the plan on a pay as you go basis.

**10-year trend information will be presented prospectively

WEST SLOPE WATER DISTRICT

**SCHEDULE OF THE DISTRICT'S PROPORTIONATE SHARE OF THE NET PENSION LIABILITY (ASSET)
OREGON PUBLIC EMPLOYEES RETIREMENT SYSTEM
LAST FIVE FISCAL YEARS****

<u>Fiscal Year Ended</u>	<u>Measurement Date</u>	<u>District's Proportion of Net Pension Liability (Asset)</u>	<u>District's Proportionate Share of Net Pension Liability (Asset)</u>	<u>District's Covered Payroll</u>	<u>District's Proportionate Share of NPL(A) as % of Payroll</u>	<u>Plan's Fiduciary Net Position as % of Total Pension Liability</u>
6/30/2018	6/30/2017	0.0048%	\$ 652,438	\$ 519,845	125.5%	83.1%
6/30/2017	6/30/2016	0.0073%	1,088,476	502,837	216.5%	80.5%
6/30/2016	6/30/2015	0.0079%	451,442	425,820	106.0%	91.9%
6/30/2015	6/30/2014	0.0074%	(168,169)	549,701	-30.6%	103.6%
6/30/2014	6/30/2013	0.0074%	378,607	503,986	75.1%	91.97%

** 10-year trend information required by GASB Statement 68 will be presented prospectively

WEST SLOPE WATER DISTRICT
SCHEDULE OF THE DISTRICT'S CONTRIBUTIONS
OREGON PUBLIC EMPLOYEES RETIREMENT SYSTEM
LAST FIVE FISCAL YEARS**

	Contractually required contributions	Contributions in relation to contractually required contributions	Contribution deficiency (excess)	District's covered payroll	Contributions as a percentage of covered payroll
2018	\$ 102,468	\$ (102,468)	\$ -	\$ 519,845	20%
2017	74,891	(74,891)	-	502,837	15%
2016	66,170	(66,170)	-	425,820	16%
2015	81,691	(81,691)	-	549,701	15%
2014	87,845	(87,845)	-	503,986	17%

** 10-year trend information required by GASB Statement 68 will be presented prospectively

OTHER SUPPLEMENTARY INFORMATION

Pursuant to the provisions of Oregon Revised Statute, an individual schedule of revenues, expenditures, and changes in fund balances – budget and actual be displayed for each fund where legally adopted budgets are required.

Budgetary Comparison schedules of Water Operations include the following funds:

General Fund

Accounts for all financial resources and expenses of the district, except those required to be accounted for in another fund. The funds principal source of revenue is water sales.

Rate Stabilization Reserve Fund

Accounts for monies accumulated for purposes of assisting with meeting bond debt covenants while smoothing rate spikes. The source of revenue is operating transfers from the General Fund.

Equipment Reserve Fund

Accounts for monies accumulated for future work truck acquisitions or replacements. The principal source of revenue is operating transfers from the General Fund.

Capital Improvement Reserve Fund

Accounts for monies accumulated for future capital improvements and monies spent on capital improvements. The principal source of revenue is operating transfers from the General Fund.

System Development Charge Fund

This fund accounts for system improvement charges. The principal source of revenue is system development charges.

For Generally Accepted Accounting Principles purposes, these aforementioned funds are consolidated and reported as one Enterprise fund.

WEST SLOPE WATER DISTRICT
RECONCILIATION OF BUDGETARY BASIS CHANGE IN FUND BALANCE
TO GAAP BASIS CHANGE IN NET POSITION
For the Fiscal Year Ended June 30, 2018

	<u>Total</u> <u>Revenues</u>	<u>Total</u> <u>Expenditures</u>	<u>Net</u>
BUDGETARY BASIS			
General Fund	\$ 3,197,667	\$ 2,678,506	\$ 519,161
Rate Stabilization Reserve Fund	-	-	-
Equipment Replacement Reserve Fund	3,832	81,870	(78,038)
Capital Improvement Reserve Fund	28,736	495,846	(467,110)
System Development Charges Fund	6,026	56,028	(50,002)
	<u>\$ 3,236,261</u>	<u>\$ 3,312,250</u>	<u>(75,989)</u>
ADD (DEDUCT) ITEMS TO RECONCILE TO NET			
INCOME ON A FINANCIAL REPORTING BASIS			
Payment of long-term debt			240,000
Capital outlay			574,036
Depreciation			(367,989)
Change in accrued bond interest payable			2,400
Bond premium amortization			2,384
Change in net OPEB obligation			(14,623)
Change in deferred inflows/outflows			(426,929)
Payment of pension transitional liability			14,040
Change in net pension liability/asset			436,038
CHANGE IN NET POSITION			<u>\$ 383,368</u>

WEST SLOPE WATER DISTRICT
GENERAL FUND
SCHEDULE OF REVENUES, EXPENDITURES AND
CHANGES IN FUND BALANCE – BUDGET AND ACTUAL
For the Fiscal Year Ended June 30, 2018

	<i>Budget Amounts</i>		<i>Actual</i>	<i>Variance</i>
	<i>Original</i>	<i>Final</i>		
REVENUES				
Charges for services	\$2,970,000	\$2,970,000	\$3,110,171	\$140,171
Fines and forfeitures	-	-	6,605	6,605
Rights of way fees	38,000	38,000	-	(38,000)
Miscellaneous	34,000	34,000	80,891	46,891
<i>Total Revenues</i>	<u>3,042,000</u>	<u>3,042,000</u>	<u>3,197,667</u>	<u>155,667</u>
EXPENDITURES				
Personal services	848,000	873,000	863,317	9,683
Materials and services	1,641,000	1,616,000	1,514,361	101,639
Debt service				
Principal	240,000	240,000	240,000	-
Interest	61,000	61,000	60,828	172
Contingency	930,000	730,000	-	730,000
<i>Total Expenditures</i>	<u>3,720,000</u>	<u>3,520,000</u>	<u>2,678,506</u>	<u>841,494</u>
REVENUES OVER (UNDER)				
EXPENDITURES	(678,000)	(478,000)	519,161	997,161
OTHER FINANCING SOURCES (USES)				
Transfers out	(526,000)	(726,000)	(526,000)	(200,000)
NET CHANGE IN FUND BALANCE	<u>(1,204,000)</u>	<u>(1,204,000)</u>	<u>(6,839)</u>	<u>797,161</u>
FUND BALANCE, Beginning of year	<u>1,204,000</u>	<u>1,204,000</u>	<u>1,195,837</u>	<u>(8,163)</u>
FUND BALANCE, End of year	<u>\$ -</u>	<u>\$ -</u>	<u>\$ 1,188,998</u>	<u>\$ 788,998</u>

WEST SLOPE WATER DISTRICT
RATE STABILIZATION RESERVE FUND
SCHEDULE OF REVENUES, EXPENDITURES AND
CHANGES IN FUND BALANCE – BUDGET AND ACTUAL
For the Fiscal Year Ended June 30, 2018

	<i>Budget Amounts</i>		<i>Actual</i>	<i>Variance</i>
	<i>Original</i>	<i>Final</i>		
EXPENDITURES				
Contingency	\$ 200,000	\$ 200,000	\$ -	\$ 200,000
<i>Total Expenditures</i>	<u>200,000</u>	<u>200,000</u>	<u>-</u>	<u>200,000</u>
REVENUES OVER (UNDER)				
EXPENDITURES	(200,000)	(200,000)	-	(200,000)
OTHER FINANCING SOURCES (USES)				
Transfers in	<u>200,000</u>	<u>200,000</u>	<u>200,000</u>	<u>-</u>
NET CHANGE IN FUND BALANCE	-	-	200,000	(200,000)
FUND BALANCE, Beginning of year	<u>-</u>	<u>-</u>	<u>-</u>	<u>-</u>
FUND BALANCE, End of year	<u>\$ -</u>	<u>\$ -</u>	<u>\$ 200,000</u>	<u>\$ 200,000</u>

WEST SLOPE WATER DISTRICT
EQUIPMENT RESERVE FUND
SCHEDULE OF REVENUES, EXPENDITURES AND
CHANGES IN FUND BALANCE – BUDGET AND ACTUAL
For the Fiscal Year Ended June 30, 2018

	<i>Budget Amounts</i>		<i>Actual</i>	<i>Variance</i>
	<i>Original</i>	<i>Final</i>		
REVENUES				
Miscellaneous	\$ 2,000	\$ 2,000	\$ 3,832	\$ 1,832
EXPENDITURES				
Materials and services	150	150	-	150
Capital outlay	186,850	186,850	81,870	104,980
<i>Total Expenditures</i>	<u>187,000</u>	<u>187,000</u>	<u>81,870</u>	<u>105,130</u>
REVENUES OVER (UNDER)				
EXPENDITURES	(185,000)	(185,000)	(78,038)	106,962
OTHER FINANCING SOURCES (USES)				
Transfers in	<u>109,000</u>	<u>109,000</u>	<u>109,000</u>	<u>-</u>
NET CHANGE IN FUND BALANCE	(76,000)	(76,000)	30,962	106,962
FUND BALANCE, Beginning of year	<u>232,000</u>	<u>232,000</u>	<u>236,299</u>	<u>4,299</u>
FUND BALANCE, End of year	<u>\$ 156,000</u>	<u>\$ 156,000</u>	<u>\$ 267,261</u>	<u>\$ 111,261</u>

WEST SLOPE WATER DISTRICT
CAPITAL IMPROVEMENT RESERVE FUND
SCHEDULE OF REVENUES, EXPENDITURES AND
CHANGES IN FUND BALANCE – BUDGET AND ACTUAL
For the Fiscal Year Ended June 30, 2018

	<i>Budget Amounts</i>		<i>Actual</i>	<i>Variance</i>
	<i>Original</i>	<i>Final</i>		
REVENUES				
Miscellaneous	\$ 13,000	\$ 13,000	\$ 28,736	\$ 15,736
EXPENDITURES				
Materials and services	150	150	-	150
Capital outlay	1,365,850	1,365,850	495,846	870,004
<i>Total Expenditures</i>	<u>1,366,000</u>	<u>1,366,000</u>	<u>495,846</u>	<u>870,154</u>
REVENUES OVER (UNDER)				
EXPENDITURES	(1,353,000)	(1,353,000)	(467,110)	885,890
OTHER FINANCING SOURCES (USES)				
Transfers in	417,000	417,000	417,000	-
NET CHANGE IN FUND BALANCE	(936,000)	(936,000)	(50,110)	885,890
FUND BALANCE, Beginning of year	<u>1,668,000</u>	<u>1,668,000</u>	<u>1,921,351</u>	<u>253,351</u>
FUND BALANCE, End of year	<u>\$ 732,000</u>	<u>\$ 732,000</u>	<u>\$ 1,871,241</u>	<u>\$ 1,139,241</u>

WEST SLOPE WATER DISTRICT
SYSTEM DEVELOPMENT CHARGE FUND
SCHEDULE OF REVENUES, EXPENDITURES AND
CHANGES IN FUND BALANCE – BUDGET AND ACTUAL
For the Fiscal Year Ended June 30, 2018

	<i>Budget Amounts</i>		<i>Actual</i>	<i>Variance</i>
	<i>Original</i>	<i>Final</i>		
REVENUES				
System development charges	\$ 8,000	\$ 8,000	\$ 5,375	\$ (2,625)
Miscellaneous	1,000	1,000	651	(349)
<i>Total Revenues</i>	9,000	9,000	6,026	(2,974)
EXPENDITURES				
Materials and services	150	150	-	150
Debt service	56,000	56,000	56,028	(28)
Reserved for future expenditures	12,850	12,850	-	12,850
<i>Total Expenditures</i>	69,000	69,000	56,028	12,972
NET CHANGE IN FUND BALANCE	(60,000)	(60,000)	(50,002)	9,998
FUND BALANCE, Beginning of year	60,000	60,000	53,253	(6,747)
FUND BALANCE, End of year	\$ -	\$ -	\$ 3,251	\$ 3,251

WEST SLOPE WATER DISTRICT

NOTES TO THE OTHER SUPPLEMENTARY INFORMATION

June 30, 2018

Budgetary Information

On or before June 30 of each year, the District enacts a resolution approving the budget and appropriating expenditures. Prior to enacting this resolution, the proposed budget is presented to a budget committee consisting of members of the District Board of Commissioners and a like number of interested citizens. The budget committee presents the budget to the District Board of Commissioners for budget hearings prior to enactment of the resolution. The District budgets all funds as required by Oregon Local Budget Law.

The resolution authorizing appropriations for each fund sets the legal level of control by which expenditures cannot legally exceed appropriations. The district adopts its budget at the object level within each fund: Personal Services, Materials and Services, Capital Outlay, Contingency, and Transfers to Other Funds. The detail budget document, however, is required to contain more specific information for the above mentioned expenditure categories. Unexpected additional resources may be added to the budget through the use of a supplemental budget. A supplemental budget requires hearings before the public, publications in newspapers, and adoption by the District Board of Commissioners. Management may modify original and supplemental budgets by the use of appropriation transfers between the legal levels of control within a fund. Management may not amend the budget without seeking the approval of the Board of Commissioners.

On June 20, 2018 the board passed resolution 04-2018 establishing the rate stabilization reserve fund effective prior to June 30, 2018.

On June 20, 2018 the board adopted a supplemental budget authorizing a \$200,000 transfer from the general fund contingency into the rate stabilization reserve fund contingency.

On June 20 the board approved resolution 03-2018 authorizing the transfer of \$25,000 of appropriations from materials and services to personnel services.

STATISTICAL SECTION

This part of the West Slope Water District's comprehensive annual financial report presents detailed information as a context for understanding what the information in the financial statements, note disclosures, and required supplementary information says about the District's overall financial health.

Contents	Page
Financial Trends <i>These schedules contain trend information to help the reader understand the District's financial performance and well-being have changed over time.</i>	47
Revenue Capacity <i>These schedules contain information to help the reader assess the District's most significant local revenue source, water rates revenue.</i>	50
Debt Capacity <i>These schedules present information to help the reader assess the affordability of the District's current levels of outstanding debt and the District's ability to issue additional debt in the future.</i>	54
Demographic Information <i>These schedules offer demographic information to help the reader understand the environment within which the District's financial activities take place.</i>	56
Operating Information <i>These schedules contain service and infrastructure data to help the reader understand how the information in the District's financial report relates to services provided and activities performed.</i>	58

WEST SLOPE WATER DISTRICT
NET POSITION BY COMPONENT
Last Ten Fiscal years
(accrual basis of accounting)

Fiscal Year	Net Invested in Capital Assets	Unrestricted	Restricted	Total Net Position
2018	\$ 7,548,389	\$ 2,472,570	\$ 3,250	\$ 10,024,209
2017	7,099,958	2,487,631	53,252	9,640,841
2016	5,863,471	3,312,080	110,512	9,286,063
2015	5,762,949	3,102,909	92,106	8,957,964
2014	5,863,722	2,606,512	127,433	8,597,667
2013	5,932,798	2,012,576	162,634	8,108,008
2012	5,697,259	1,823,376	200,084	7,720,719
2011	5,696,388	1,441,235	261,375	7,398,998
2010	5,348,034	1,523,095	233,736	7,104,865
2009	4,180,583	2,745,057	215,078	7,140,718

Source: West Slope Water District Financial Statements

WEST SLOPE WATER DISTRICT
CHANGES IN NET POSITION Page 1/2
Last Ten Fiscal years
(accrual basis of accounting)

	<u>2009</u>	<u>2010</u>	<u>2011</u>	<u>2012</u>
OPERATING REVENUES:				
Water service	\$ 2,239,438	\$ 2,157,584	\$ 2,448,556	\$ 2,594,387
Service installations	2,954	4,376	794	2,655
Penalties	7,050	6,760	7,370	9,045
Materials and labor billed	4,566	1,247	4,586	89
Beaverton Reimbursement	-	-	15,548	15,708
Miscellaneous	7,952	17,783	26,433	5,255
Rights of way fees	-	-	-	33,000
Total operating revenues	<u>2,261,960</u>	<u>2,187,750</u>	<u>2,503,287</u>	<u>2,660,139</u>
OPERATING EXPENSES:				
Salaries and wages	403,185	392,625	460,949	451,128
Payroll taxes and benefits	241,782	234,024	235,724	284,411
Water purchases	863,740	952,460	836,075	896,502
Repair and maintenance	149,624	61,860	53,036	48,036
Depreciation	168,931	247,802	307,362	321,879
Cost of services	15,566	13,552	12,016	10,920
Supplies	2,662	2,018	2,594	1,966
Utilities	13,506	14,136	15,023	16,414
Administrative	98,161	102,827	102,838	131,101
Rights of way fees	-	-	-	-
Professional services	74,153	121,088	47,961	40,101
Total operating expenses	<u>2,031,310</u>	<u>2,142,392</u>	<u>2,073,578</u>	<u>2,202,458</u>
Operating income (loss)	230,650	45,358	429,709	457,681
NON-OPERATING INCOME (EXPENSE):				
Interest income	92,187	13,950	5,523	6,571
Interest expense	(3,184)	(112,466)	(167,615)	(160,878)
Gain (Loss) on disposal of asset	-	-	-	-
Total non-operating income (expenses)	<u>89,003</u>	<u>(98,516)</u>	<u>(162,092)</u>	<u>(154,307)</u>
CAPITAL CONTRIBUTIONS:				
SDC	13,245	17,305	26,516	18,347
Change in net position	332,898	(35,853)	294,133	321,721
NET POSITION, BEGINNING	6,807,820	7,140,718	7,104,865	7,398,998
Accumulative adjustment for change in accounting principal	<u>-</u>	<u>-</u>	<u>-</u>	<u>-</u>
NET POSITION, ENDING	<u>\$ 7,140,718</u>	<u>\$ 7,104,865</u>	<u>\$ 7,398,998</u>	<u>\$ 7,720,719</u>

*FY 2013 Prior Period Adjustment reflects compliance with GASB No.63 Financial Reporting of Deferred Outflows of Resources, Deferred Inflows of Resources, and Net Position.

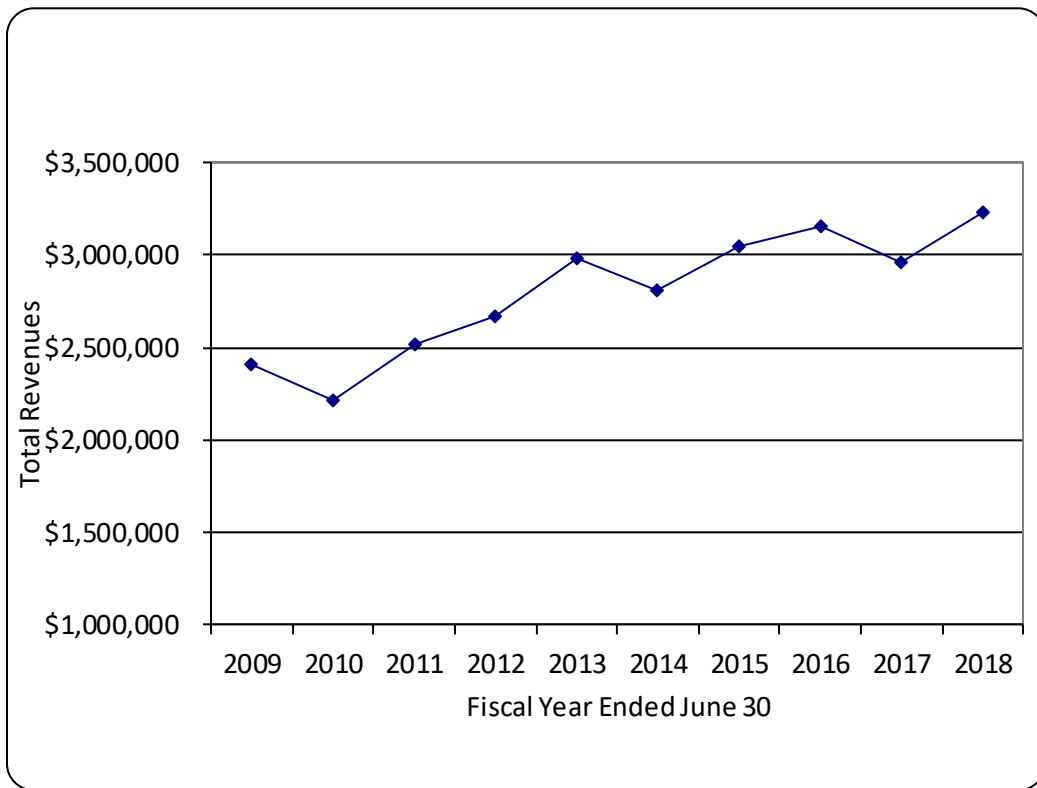
*FY 2015 Prior Period adjustment reflects compliance with GASB No. 68 Accounting and Financial Reporting for Pensions

WEST SLOPE WATER DISTRICT
CHANGES IN NET POSITION (continued page 2/2)
Last Ten Fiscal years
(accrual basis of accounting)

<u>2013</u>	<u>2014</u>	<u>2015</u>	<u>2016</u>	<u>2017</u>	<u>2018</u>
\$ 2,936,698	\$ 2,767,456	\$ 3,001,360	\$ 3,097,839	\$ 2,873,040	\$ 3,101,349
2,050	4,676	4,072	12,741	819	4,801
9,880	9,695	6,195	5,451	6,429	6,605
269	340	446	3,916	4,749	4,021
15,624	15,533	15,649	15,725	15,546	15,572
11,978	3,722	3,019	2,579	438	576
-	-	-	-	20,385	39,135
<u>2,976,499</u>	<u>2,801,422</u>	<u>3,030,741</u>	<u>3,138,251</u>	<u>2,921,406</u>	<u>3,172,059</u>
499,973	518,856	544,032	529,018	523,005	552,766
229,047	220,298	8,002	610,988	340,380	287,843
1,009,564	824,241	877,072	927,791	962,458	1,222,744
84,264	128,322	84,272	97,108	107,297	87,890
330,875	339,724	344,741	345,390	337,117	367,989
10,914	94	-	-	-	-
3,626	48,658	54,842	51,664	55,352	63,129
15,452	21,817	13,630	13,989	16,431	14,006
125,913	65,407	57,104	63,267	67,093	58,117
-	-	-	-	20,499	39,173
<u>68,156</u>	<u>54,841</u>	<u>73,610</u>	<u>61,089</u>	<u>36,661</u>	<u>32,982</u>
<u>2,377,784</u>	<u>2,222,258</u>	<u>2,057,305</u>	<u>2,700,304</u>	<u>2,466,293</u>	<u>2,726,639</u>
598,715	579,164	973,436	437,947	455,113	445,420
7,974	9,473	11,582	17,852	33,164	46,827
(153,923)	(146,790)	(154,367)	(145,608)	(136,187)	(126,254)
10,200	10,000	-	-	-	12,000
<u>(135,749)</u>	<u>(127,317)</u>	<u>(142,785)</u>	<u>(127,756)</u>	<u>(103,023)</u>	<u>(67,427)</u>
<u>38,859</u>	<u>37,812</u>	<u>34,130</u>	<u>17,908</u>	<u>2,688</u>	<u>5,375</u>
501,825	489,659	864,781	328,099	354,778	383,368
7,720,719	8,108,008	8,597,667	8,957,964	9,286,063	9,640,841
<u>(114,536)</u>	<u>-</u>	<u>(504,484)</u>	<u>-</u>	<u>-</u>	<u>-</u>
<u>\$ 8,108,008</u>	<u>\$ 8,597,667</u>	<u>\$ 8,957,964</u>	<u>\$ 9,286,063</u>	<u>\$ 9,640,841</u>	<u>\$ 10,024,209</u>

WEST SLOPE WATER DISTRICT
REVENUES BY SOURCE
Last Ten Fiscal years
(accrual basis of accounting)

<i>Fiscal Year</i>	<i>Water Services</i>	<i>Services Billed</i>	<i>Interest Income</i>	<i>Other</i>	<i>Total</i>
2018	\$ 3,101,349	\$ 8,822	\$ 46,827	\$ 73,888	\$ 3,230,886
2017	2,873,040	5,568	33,164	42,798	2,954,570
2016	3,097,839	16,657	17,852	23,755	3,156,103
2015	3,001,360	4,518	11,582	24,863	3,042,323
2014	2,767,456	5,016	9,473	28,950	2,810,895
2013	2,936,698	2,319	7,974	37,482	2,984,473
2012	2,594,387	2,744	6,571	63,008	2,666,710
2011	2,448,556	5,380	5,523	60,319	2,519,778
2010	2,157,584	5,623	13,950	41,848	2,219,005
2009	2,282,623	7,520	92,187	28,247	2,410,577



Source: West Slope Water District Financial Statements

WEST SLOPE WATER DISTRICT
WATER RATE SCHEDULE
Last Ten Fiscal years

Historical Water Rates

	<i>(No Change)</i>				
<i>Date of Rate Change **:</i>	<u>6/30/2018</u>	<u>11/1/2014</u>	<u>11/1/2012</u>	<u>11/1/2011</u>	<u>7/1/2010</u>
Commodity Charge	\$ 4.31	\$ 4.31	\$ 4.31	\$ 4.25	\$ 4.10
Per 100 Cubic Feet (CCF)					
Monthly Service Charge					
3/4"	14.07	14.07	13.05	11.86	7.22
1"	23.92	23.92	22.19	20.17	14.37
1-1/2"	39.27	39.27	36.43	33.12	26.30
2"	60.15	60.15	55.80	50.73	40.62
3"	130.82	130.82	121.35	110.32	78.79
4"	197.79	197.79	183.48	166.80	121.74
6"	363.24	363.24	336.96	306.33	241.03

<i>Date of Rate Change :</i>	<u>2/1/2010</u>	<u>7/1/2009</u>	<u>2/1/2009</u>	<u>7/1/2008</u>	<u>2/1/2008</u>
Commodity Charge	\$ 3.64	\$ 3.48	\$ 3.36	\$ 3.08	\$ 2.95
Per 100 Cubic Feet (CCF)					
Monthly Service Charge					
3/4"	7.22	6.87	6.87	6.28	6.28
1"	14.37	13.69	13.69	12.50	12.50
1-1/2"	26.30	25.05	25.05	22.88	22.88
2"	40.62	38.69	38.69	35.33	35.33
3"	78.79	75.04	75.04	68.53	68.53
4"	121.74	115.94	115.94	105.88	105.88
6"	241.03	229.55	229.55	209.64	209.64

**No Rate Increase 11/1/2013, 11/01/2015, 11/01/2016, 11/01/2017
 conversions: 748 gallons equals one CCF
 Source: West Slope Water District Utility Billing Records

WEST SLOPE WATER DISTRICT
SYSTEM DEVELOPMENT CHARGES SCHEDULE
Last Ten Fiscal years

Historical SDC Rates

	<i>(No Change)</i>				
<i>Date of Rate Change **:</i>	<u>6/30/2018</u>	<u>12/1/2015</u>	<u>2/1/2015</u>	<u>2/1/2014</u>	<u>2/1/2013</u>
<u><i>Meter Size</i></u>					
3/4"	\$ 1,344	\$ 1,344	\$ 3,127	\$ 3,054	\$ 2,833
1"	2,687	2,687	7,812	7,629	7,077
1-1/2"	6,718	6,718	15,633	15,266	14,161
2"	10,749	10,749	25,011	24,425	22,658
3"	21,498	21,498	49,932	48,763	45,235
4"	33,591	33,591	78,469	76,630	71,085
6"	67,182	67,182	156,325	152,661	141,615

Historical SDC Rates

<i>Date of Rate Change:</i>	<u>2/1/2012</u>	<u>2/1/2011</u>	<u>2/1/2010</u>	<u>2/1/2009</u>	<u>2/1/2008</u>
<u><i>Meter Size</i></u>					
3/4"	\$ 2,779	\$ 2,672	\$ 2,652	\$ 2,679	\$ 2,642
1"	6,943	6,676	6,627	6,697	6,604
1-1/2"	13,890	13,356	13,258	13,392	13,208
2"	22,224	21,369	21,212	21,427	21,133
3"	44,370	42,663	42,427	42,855	42,267
4"	69,736	67,054	66,291	66,960	66,042
6"	138,906	133,563	132,582	133,921	132,084

** No rate change since 12/01/2015
Source: West Slope Water District

WEST SLOPE WATER DISTRICT
UNCOLLECTABLE DEBT
Last Ten Fiscal years

<i>Fiscal Year Ended June 30</i>	<i>Write Off</i>	<i>Water Revenues</i>	<i>% of Revenue</i>
2018	\$ -	\$ 3,101,349	0.000%
2017	-	2,873,040	0.000%
2016	1,908	3,097,839	0.062%
2015		3,001,360	0.000%
2014	1,194	2,767,456	0.043%
2013		2,936,698	0.000%
2012	492	2,594,387	0.019%
2011	-	2,157,584	0.000%
2010	336	2,239,438	0.015%
2009	1,188	1,982,623	0.060%

Source: West Slope Water District Utility Billing Records

WEST SLOPE WATER DISTRICT
REVENUE BOND DEBT COVERAGE
Last Ten Fiscal years

Fiscal Year	Income & Revenue*	Operating Expense**	Net Available Revenue	SDC Revenue	Debt Service			Coverage Ratios	
					Principal	Interest	Total	With SDC	Without SDC
<i>Required ratio of net revenue to debt service as per the District's bond resolution:</i>								<i>1.25</i>	<i>1.15</i>
2018	\$ 3,003,314	\$ 2,358,650	\$ 644,664	\$ 5,375	\$ 240,000	\$ 116,856	\$ 356,856	1.822	1.807
2017	2,918,639	2,108,677	809,962	2,688	230,000	126,256	356,256	2.281	2.274
2016	3,140,378	2,354,914	785,464	17,908	225,000	135,356	360,356	2.229	2.180
2015	3,026,674	1,712,565	1,314,109	34,130	215,000	143,619	358,619	3.760	3.664
2014	2,795,363	1,882,534	912,829	37,812	205,000	150,969	355,969	2.671	2.564
2013	2,968,849	2,046,909	921,940	38,859	200,000	158,056	358,056	2.683	2.575
2012	2,618,002	1,880,579	737,423	18,347	195,000	164,969	359,969	2.100	2.049
2011	2,493,262	1,766,216	727,046	26,516	185,000	171,619	356,619	2.113	2.039
2010	2,201,700	1,894,590	307,110	17,305	180,000	178,006	358,006	0.906	0.858
2009	2,354,147	1,862,379	491,768	13,245	155,000	202,009	357,009	1.415	1.377

* Income excludes Beaverton reimbursement & insurance proceeds

* Income includes an increase for transfers from and a decrease for transfers to the rate stabilization fund as follows:

2018 \$ (200,000) Transfer to rate stabilization

** Operating expense excludes depreciation expense

Additional information on Long-Term Debt is located in the Notes to Basic Financial Statements

Source: West Slope Water District Financial Statements

WEST SLOPE WATER DISTRICT
DEBT PER SERVICE CONNECTION
Last Ten Fiscal years

<i>As of June 30</i>	<i>Debt</i>	<i>Service Connections</i>	<i>Debt Per Service Connection</i>
2018	\$ 2,993,050	3,225	\$ 928
2017	3,235,434	3,221	1,004
2016	3,467,818	3,216	1,078
2015	3,695,203	3,218	1,148
2014	3,912,588	3,308	1,183
2013	4,119,972	3,329	1,238
2012	4,322,355	3,326	1,300
2011	4,519,740	3,320	1,361
2010	4,707,125	3,318	1,419
2009	4,889,510	3,312	1,476

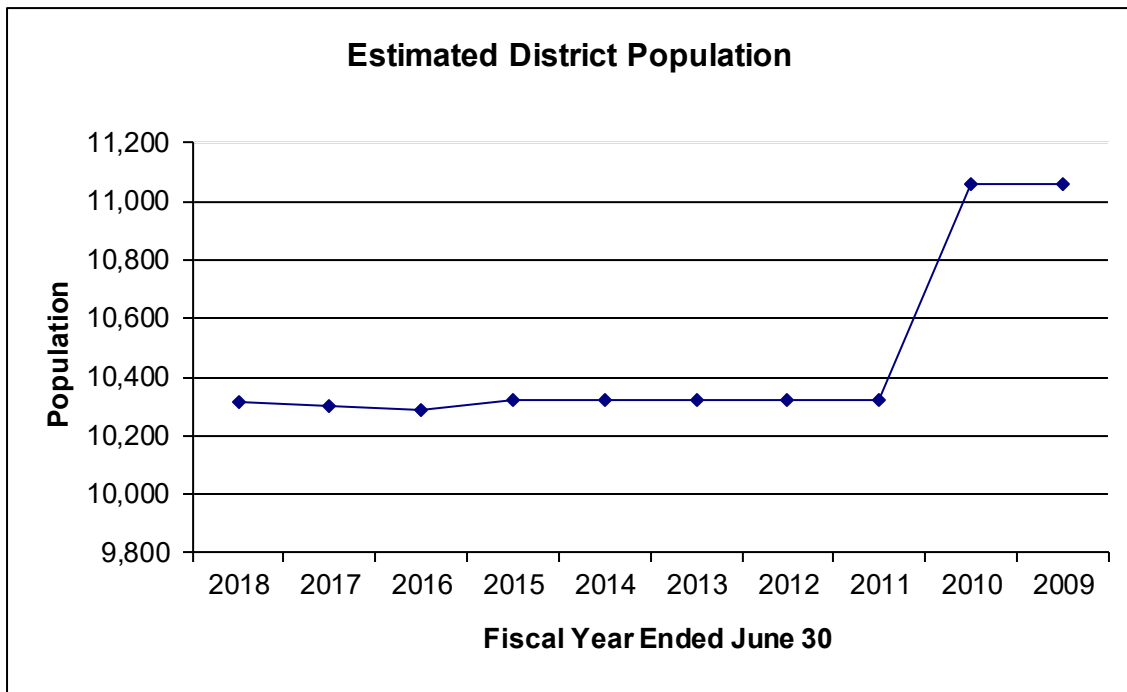
Source: West Slope Water District Financial Statements
West Slope Water District Utility Billing Records

Additional information on Long-Term Debt is located in the Notes
to Basic Financial Statements

WEST SLOPE WATER DISTRICT
FULL-TIME EQUIVALENT EMPLOYEES BY FUNCTION
Last Ten Fiscal years

<i>As of June 30</i>	<i>Administration</i>	<i>Field Operations</i>	<i>Total</i>	<i>Service Connections</i>	<i>District Population (Estimated)</i>	<i>Employees Per 1,000 population</i>
2018	3.00	4.00	7.00	3,225	10,316	0.68
2017	3.00	4.00	7.00	3,221	10,302	0.68
2016	3.00	4.00	7.00	3,216	10,288	0.68
2015	3.00	4.00	7.00	3,218	10,324	0.68
2014	3.00	4.00	7.00	3,308	10,324	0.68
2013	3.00	4.00	7.00	3,329	10,324	0.68
2012	3.00	4.00	7.00	3,326	10,324	0.68
2011	3.00	4.00	7.00	3,320	10,324	0.68
2010	2.80	3.00	5.80	3,318	11,059	0.52
2009	2.80	3.00	5.80	3,312	11,059	0.52

Source: West Slope Water District Payroll Records
 Portland State University Center for Population Research and Census



WEST SLOPE WATER DISTRICT

TOP TEN RATE PAYERS

Last Ten Fiscal years

<i>Rate Payer</i>	<i>Fiscal Year 2018</i>			<i>Fiscal Year 2009</i>		
	<i>Usage (CCF*)</i>	<i>Rank</i>	<i>Percentage of District Total</i>	<i>Usage (CCF*)</i>	<i>Rank</i>	<i>Percentage</i>
Canyon Park Apartments	16,544	1	2.72%	15,443	2	2.32%
Commerce Properties	14,027	2	2.30%	16,183	1	2.43%
Kaady Car Wash	9,881	3	1.62%	7,553	5	1.13%
Jesuit High School	9,450	4	1.55%	11,378	3	1.71%
Shilo Inns	8,361	5	1.37%	7,202	6	1.08%
Lanphere Enterprises	8,075	6	1.33%	n/a	n/a	n/a
Canyon Court Condo	7,365	7	1.21%	4,336	12	0.65%
Prestige Senior Living	6,968	8	1.14%	n/a	n/a	n/a
West Slope Terrace	6,657	9	1.09%	n/a	n/a	n/a
Cambridge Real Estate	5,903	10	0.97%	n/a	n/a	n/a
TOTALS	93,231		19.23%	62,095		10.04%

Source: West Slope Water District Utility Billing Records

*1 CCF (Hundred Cubic Feet) = 748 Gallons

WEST SLOPE WATER DISTRICT
SCHEDULE OF WATER SALES AND PURCHASES
Last Ten Fiscal years

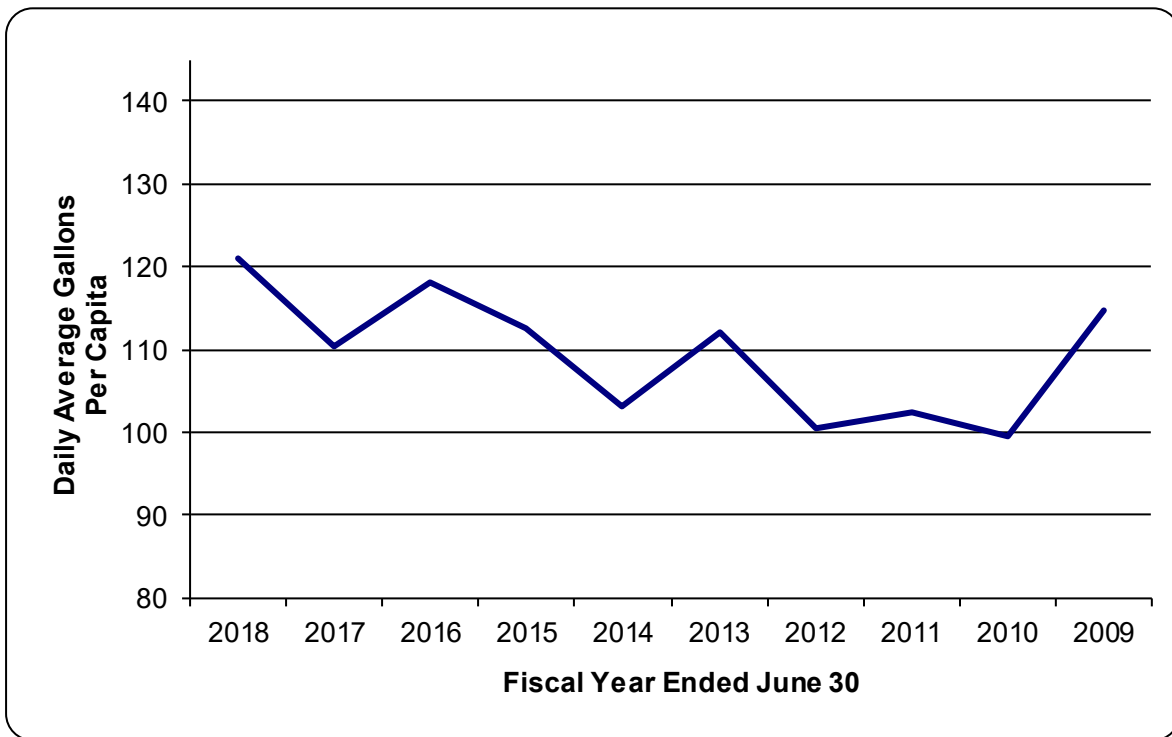
<i>Fiscal Year Ended June 30</i>	<i>Water Sales</i>	<i>Water Purchases</i>	<i>Net Amount</i>	<i>Water Purchases as a Percent of Sales</i>
2018	\$ 3,101,349	\$ 1,222,744	\$ 1,878,605	60.6%
2017	2,873,040	962,458	1,910,582	66.5%
2016	3,097,839	927,791	2,170,048	70.1%
2015	3,001,360	877,072	2,124,288	70.8%
2014	2,767,456	824,241	1,943,215	70.2%
2013	2,936,698	1,009,564	1,927,134	65.6%
2012	2,594,387	896,502	1,697,885	65.4%
2011	2,448,556	836,075	1,612,481	65.9%
2010	2,157,584	952,460	1,205,124	55.9%
2009	2,239,438	863,740	1,375,698	61.4%

WEST SLOPE WATER DISTRICT
GALLONS OF WATER USED BY CUSTOMERS
Last Ten Fiscal years

<i>Fiscal Year Ended June 30</i>	<i>Annual Gallons Consumed</i>	<i>Average Daily Consumption</i>	<i>Average Daily Per Capita Consumption</i>	<i>District Population (Estimated)</i>
2018	455,679,356	1,248,437	121	10,324
2017	415,761,588	1,139,073	110	10,324
2016	445,217,828	1,219,775	118	10,324
2015	423,943,960	1,161,490	113	10,324
2014	388,252,392	1,063,705	103	10,324
2013	422,744,168	1,158,203	112	10,324
2012	378,900,148	1,038,083	101	10,324
2011	385,852,808	1,057,131	102	10,324
2010	402,075,432	1,101,577	100	11,059
2009	463,300,728	1,269,317	115	11,059

Source: West Slope Water District

Portland State University Center for Population Research and Census



WEST SLOPE WATER DISTRICT
WATER PURCHASED AND CONSUMED
Last Ten Fiscal years

<i>Fiscal Year Ended June 30</i>	<i>Water Purchased in CCF</i>	<i>Water Sold in CCF</i>	<i>Unbilled CCF</i>	<i>Annual Percent Unbilled</i>
2018	609,197	534,842	74,355	12.21%
2017	555,831	498,768	57,063	10.27%
2016	595,211	544,543	50,668	8.51%
2015	566,770	509,771	56,999	10.06%
2014	519,054	484,741	34,313	6.61%
2013	565,166	519,738	45,428	8.04%
2012	506,551	505,532	1,019	0.20%
2011	515,846	481,632	34,214	6.63%
2010	537,534	529,540	7,994	1.49%
2009	619,386	573,878	45,508	7.35%

Source: West Slope Water District



GROVE, MUELLER & SWANK, P.C.

CERTIFIED PUBLIC ACCOUNTANTS AND CONSULTANTS

475 Cottage Street NE, Suite 200, Salem, Oregon 97301

(503) 581-7788

***INDEPENDENT AUDITOR'S REPORT
REQUIRED BY OREGON STATE REGULATIONS***

Board of Commissioners
West Slope Water District
Portland, Oregon

We have audited, in accordance with auditing standards generally accepted in the United States of America, the basic financial statements of West Slope Water District as of and for the year ended June 30, 2018, and have issued our report thereon dated December 12, 2018.

Compliance and Other Matters

As part of obtaining reasonable assurance about whether the District's financial statements are free of material misstatement, we performed tests of its compliance with certain provisions of laws, regulations, contracts, and grants, including the provisions of Oregon Revised Statutes as specified in Oregon Administrative Rules 162-10-000 through 162-10-320 of the Minimum Standards for Audits of Oregon Municipal Corporations, noncompliance with which could have a direct and material effect on the determination of financial statements amounts. However, providing an opinion on compliance with those provisions was not an objective of our audit, and accordingly, we do not express such an opinion.

We performed procedures to the extent we considered necessary to address the required comments and disclosures which included, but were not limited to the following:

- **Deposit of public funds with financial institutions (ORS Chapter 295).**
- **Indebtedness limitations, restrictions and repayment.**
- **Budgets legally required (ORS Chapter 294).**
- **Insurance and fidelity bonds in force or required by law.**
- **Programs funded from outside sources.**
- **Authorized investment of surplus funds (ORS Chapter 294).**
- **Public contracts and purchasing (ORS Chapters 279A, 279B, 279C).**

In connection with our testing nothing came to our attention that caused us to believe the District was not in substantial compliance with certain provisions of laws, regulations, contracts, and grants, including the provisions of Oregon Revised Statutes as specified in Oregon Administrative Rules 162-10-000 through 162-10-320 of the Minimum Standards for Audits of Oregon Municipal Corporations.

Internal Control Over Financial Reporting

In planning and performing our audit of the financial statements, we considered the District's internal control over financial reporting to determine the audit procedures that are appropriate in the circumstances for the purpose of expressing our opinions on the financial statements, but not for the purpose of expressing an opinion on the effectiveness of the District's internal control. Accordingly, we do not express an opinion on the effectiveness of the District's internal control.

Restriction on Use

This report is intended solely for the information and use of the Board of Commissioners and management of the District and the Oregon Secretary of State and is not intended to be and should not be used by anyone other than these parties.

GROVE, MUELLER & SWANK, P.C.
CERTIFIED PUBLIC ACCOUNTANTS

By: 

Devan W. Esch, A Shareholder
December 12, 2018