

# QUARTERLY UPDATE

## BOARD MEETINGS

BOARD OF COMMISSIONERS  
AND BUDGET COMMITTEE  
Wednesday, May 17  
5pm

BOARD OF COMMISSIONERS  
AND BUDGET COMMITTEE  
Wednesday, June 21  
5pm

BOARD OF COMMISSIONERS  
Wednesday, July 19  
5pm

### What's Happening in the District?

All District Board meetings are now Hybrid meetings, in-person meetings that are also available to be attended virtually thru Zoom video conferencing. Now, the public can attend either in person or join the meeting virtually on Zoom! Here's the link if you'd like to join in: <https://tinyurl.com/49e4znj6>

Do you need assistance with our On-Line Bill Pay Service? Please contact us at 503- 292-2777 or at [customer.service@wswd.org](mailto:customer.service@wswd.org)  
We're here to help you

### CONTACT US!

3105 SW 89th Ave.  
503-292-2777

**On the web at:**  
[www.wswd.org](http://www.wswd.org)

**Email:**  
[customer.service@wswd.org](mailto:customer.service@wswd.org)

Also, check the website for our newsletters, past and present.

[www.wswd.org](http://www.wswd.org)



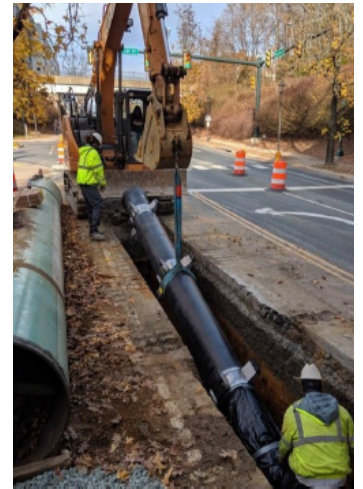
*Serving the  
West Slope  
Neighborhood  
Since 1922*

Volume 4 • Issue 2 • QUARTERLY UPDATE

April to June 2023

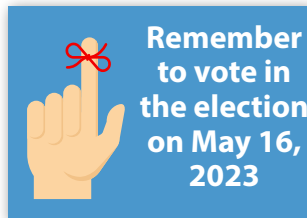
## Water Main Work on Beaverton-Hillsdale Highway Begins in May

The long-awaited project to replace a mile of old, 8-inch diameter water main along Beaverton-Hillsdale Highway will finally begin in early May. Between supply chain delays for construction materials and long delays for permits from local, county, and State entities, the start of the project is close at hand. Emery & Sons are the District's construction contractors, and the first part of the project will be to make sawcuts in the existing pavement where the new pipe will be installed. In late May, pipe installation will begin between SW 78th Avenue and SW Scholls Ferry Road. Construction in front of Jesuit High School will take place between the middle of June and the end of July when school is not in session. General construction times are 9am to 3:30pm and construction through intersections will be done at night. We hope to connect customers to the new main by Labor Day.



Paving over the constructed area will take place between Labor Day and the end of September. Throughout the project, the District will maintain a construction schedule update on the District's main webpage ([www.wswd.org](http://www.wswd.org)) to keep customers and area citizens up to date on traffic pattern changes, project stages, night work, and overall progress with the project. Look for these posts to begin in late April. We know a project of this size and complexity will create some delays and inconveniences for some. Our goal is to complete the work in a timely fashion to the high standards West Slope customers expect while keeping disruptions to a minimum where possible. When you have some questions about the project, feel free to call the District office during regular business hours.

Thank you in advance for your patience!!



## Key Events Coming Up In April, May, and June

- Construction starts on Beaverton-Hillsdale Hwy for a new 12-inch water main from Scholls Ferry Road to 91st Avenue.
- District staff will begin collecting GIS location data of for pipe, hydrants, valves, meters, etc., for the District's new asset management plan. It will take 1-2 years to map our system.
- **Thursday, May 17**, the District convenes its annual Budget Committee meeting. As a public meeting, it is open to the public to attend.
- **Thursday, June 21**, the District convenes a Public Hearing to allow the public to comment on the proposed District budget for July 1, 2023 to June 30, 2024.



Zoom Link for public meetings:  
<https://tinyurl.com/49e4znj6>

# Our Mission is to provide safe, clean, reliable water for customer use and fire suppression

## Spring is Here! Time to Do Some Irrigation and Sprinkler System Maintenance!

Well, at least it is SUPPOSED to be here if it will stop snowing in April! But before you bring your irrigation system out of hibernation to work all summer, follow these tips this Spring to keep your system in prime condition well into the late Summer:



### TIPS

✓ **Close all manual drains.** Drain valves may have been left partially open when the sprinkler system was drained and winterized last Fall.

✓ **Slowly open the main valve,** allowing the piping between the valve and the cross connection (backflow) prevention assembly to fill with water (see photo below).

✓ **Pressurize the mainline from the backflow prevention assembly to the control valves.** Have one of the control valves open while this is done so air trapped in the irrigation piping can escape through the sprinkler heads as the pipes fill with water.



✓ **Have the backflow prevention device tested by a state certified tester.** Contact West Slope Water District for specific information on rules and regulations regarding backflow prevention devices – on our website, we have a link to the list of State certified testers who work in Washington County: [http://www.wswd.org/for\\_customers/backflow/certified\\_backflow\\_testers.php](http://www.wswd.org/for_customers/backflow/certified_backflow_testers.php)

✓ **Run the entire sprinkler system, one zone at a time.** As this is being done:

1. Check for signs of leakage, especially damage to sprinkler heads or piping which could have occurred over the winter. Repair and replace as needed.
2. Check for accurate spray patterns. Adjust the sprinkler heads so they water your landscape and not sidewalks, driveways, or streets.
3. Make sure spray patterns are not blocked by plants or other materials.
4. Clean clogged nozzles and sprinkler head.

✓ **Install a rain sensor.** Rain sensors are designed to shut off sprinkler systems when rainfall reaches a preset amount, usually 1/4 inch. Once the moisture level subsides, the sensor reenables the sprinkler system, resuming the previous watering schedule. Rain sensors should be mounted in an unobstructed area exposed to open sky – minimizing the potential for fallen leaves or other debris from blocking the sensor.



[www.wswd.org](http://www.wswd.org)

3105 SW 89th Ave. Portland, OR 97298 503-292-2777